

Cambridge Judge Business School  
Cambridge Centre for Health Leadership & Enterprise

---

# COVID-19 TRACKER: INDIA

30 January 2022



Centre for  
**Health Leadership  
& Enterprise**



Reported cases are in brisk decline in India, with the national reproduction number at 0.82 on 29<sup>th</sup> January, down from 0.98 on 23<sup>rd</sup>. The filtered daily growth rate of cases declined to -6.6% on 29<sup>th</sup>, from -0.6% on 23<sup>rd</sup>. The trend value of reported daily cases can be expected to drop to about 70,000 by 12<sup>th</sup> February.

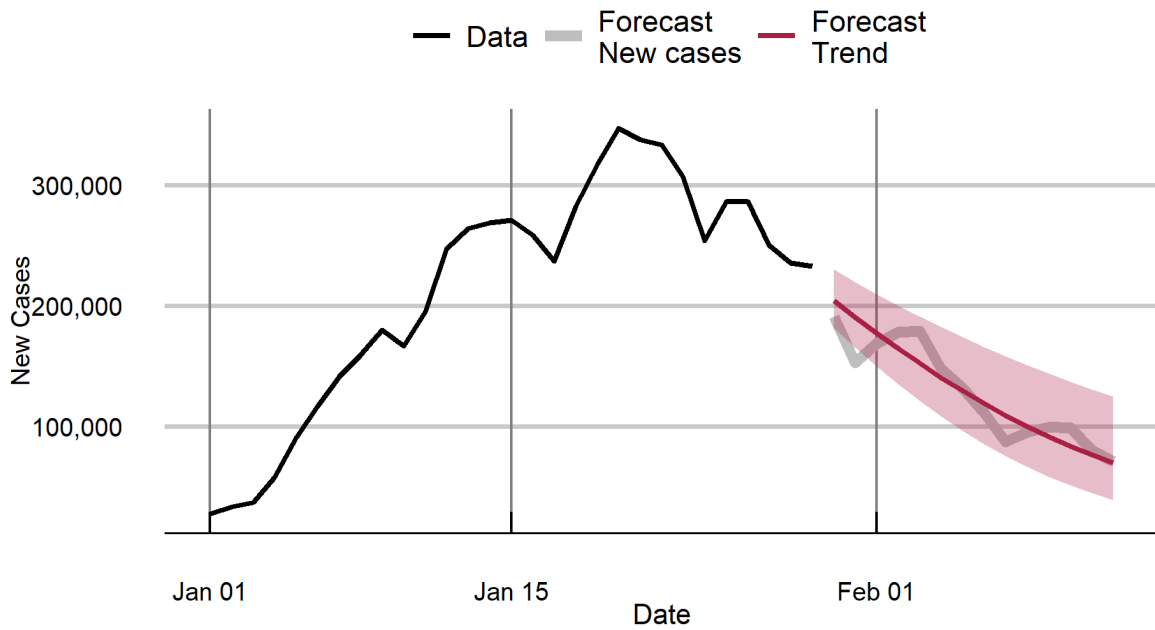
Reproduction numbers have dipped below 1 and the filtered daily growth rates turned negative in all states and union territories other than Kerala and Mizoram.

Daily cases can be expected to peak imminently in Kerala, and begin a measured decline in terms of underlying trend from 3<sup>rd</sup> February.

The only state of enduring concern is Mizoram where -- with the reproduction number at 1.26 and the daily growth rate at 7.6% as on 30 January -- the peak in cases is not yet in sight.

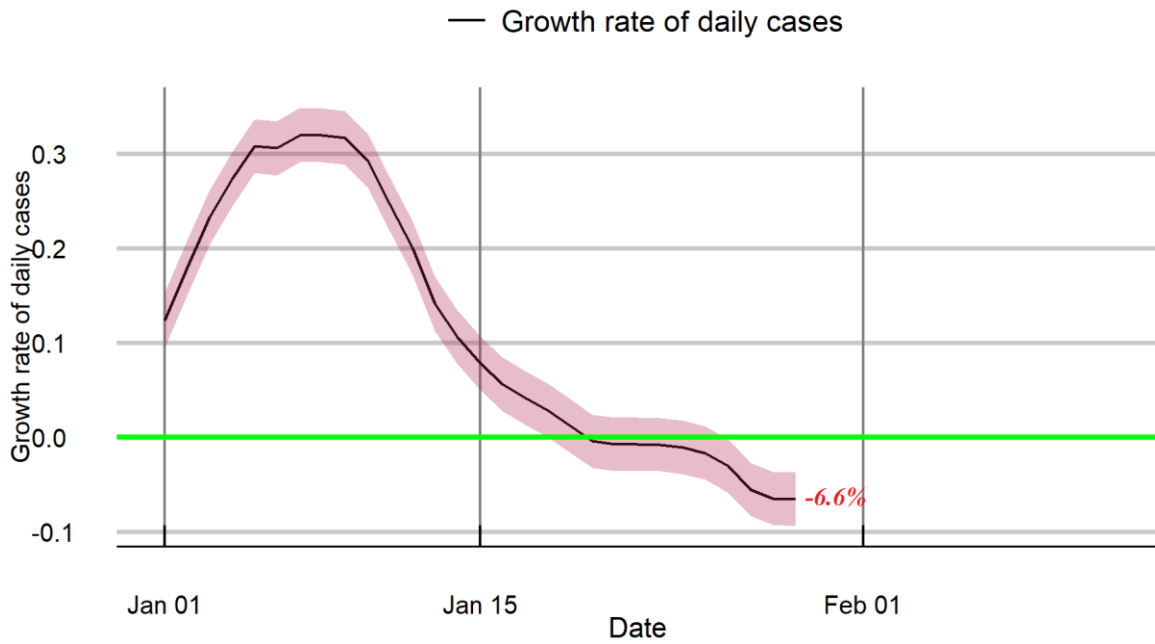
## Forecasts of daily cases: 30 January to 12 February 2022

### India

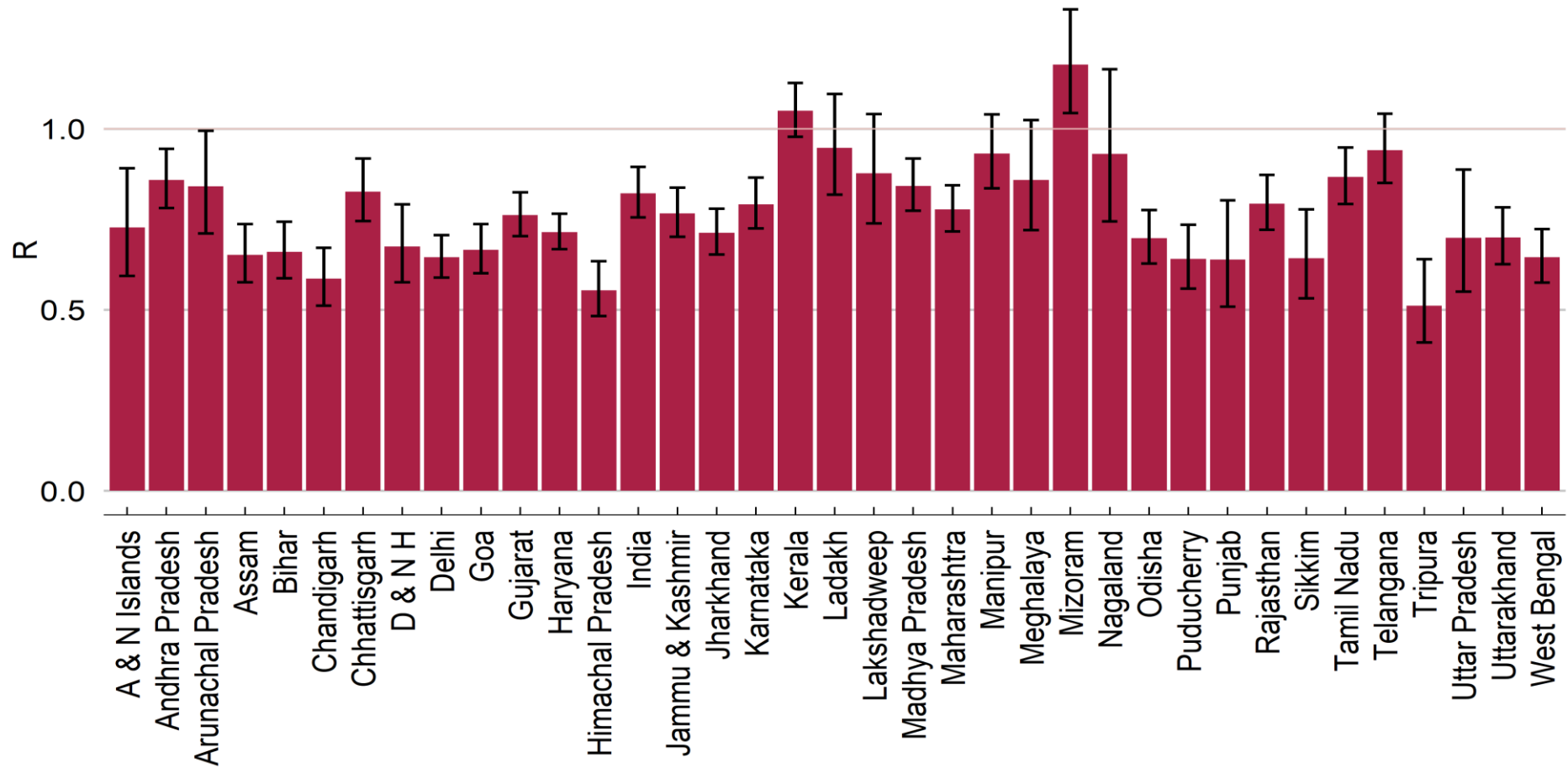


## Filtered daily growth rates of new cases: days leading up to 29 January 2022

### India



## Reproduction numbers on 29 January 2022



Bar chart shows point estimates of R and confidence intervals with 50% coverage

Note: Small numbers in Dadra and Nager Haveli make its estimates less reliable.

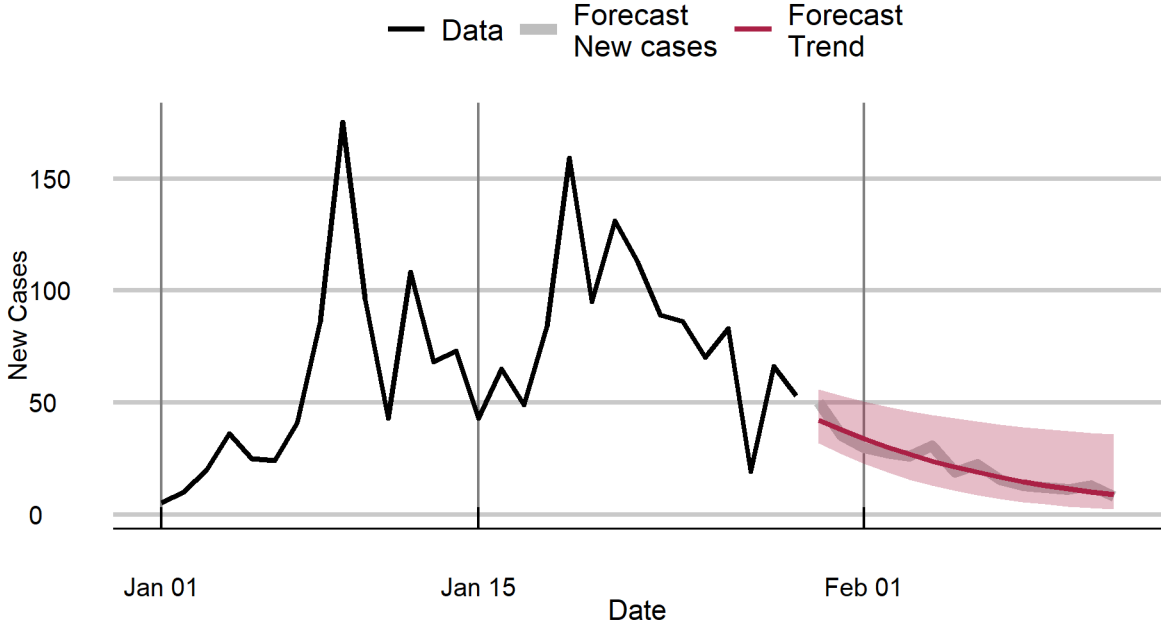
## Reproduction numbers and Filtered daily growth rates: 30 January 2022

	Reproduction number	Filtered daily growth rate
India	<i>0.82</i>	<i>-6.6%</i>
A & N Islands	0.67	-13.3%
Andhra Pradesh	<i>0.86</i>	<i>-5.1%</i>
Arunachal Pradesh	0.79	-7.8%
Assam	0.61	-16.3%
Bihar	0.67	-13.1%
Chandigarh	0.64	-15.1%
Chhattisgarh	0.81	-6.9%
D & N H	0.59	-17.6%
Delhi	0.66	-13.8%
Goa	0.69	-12.3%
Gujarat	0.75	-9.4%
Haryana	0.72	-11.1%
Himachal Pradesh	<i>0.55</i>	<i>-19.7%</i>
Jammu & Kashmir	0.77	-8.5%
Jharkhand	<i>0.71</i>	<i>-11.3%</i>
Karnataka	0.77	-8.8%
Kerala	1.05	1.6%
Ladakh	<i>0.95</i>	<i>-1.8%</i>
Lakshadweep	<i>0.88</i>	<i>-4.4%</i>
Madhya Pradesh	0.84	-5.6%
Maharashtra	<i>0.78</i>	<i>-8.4%</i>
Manipur	0.87	-4.6%
Meghalaya	0.93	-2.4%
Mizoram	1.26	7.6%
Nagaland	0.95	-1.9%
Odisha	0.72	-11.0%
Puducherry	0.66	-13.9%
Punjab	0.75	-9.7%
Rajasthan	0.82	-6.5%
Sikkim	0.67	-13.6%
Tamil Nadu	0.85	-5.5%
Telangana	0.92	-2.7%
Tripura	<i>0.51</i>	<i>-22.3%</i>
Uttar Pradesh	0.71	-11.5%
Uttarakhand	0.73	-10.4%
West Bengal	0.68	-12.9%

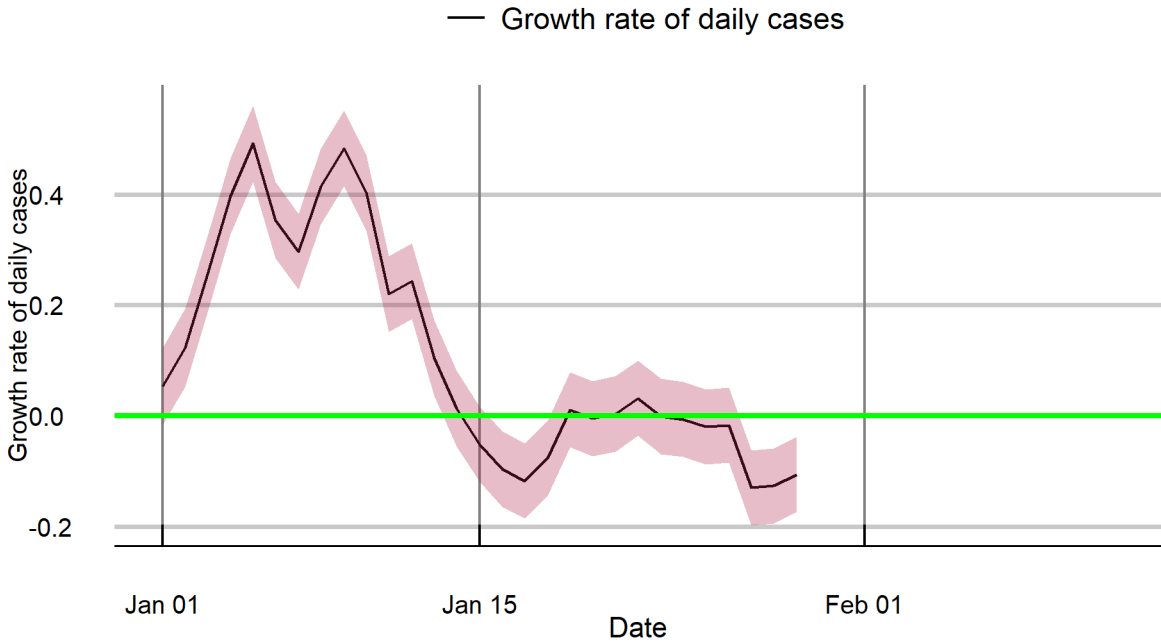
Note: Estimates for India as a whole, and for Andhra Pradesh, Himachal Pradesh, Jharkhand, Ladakh, Lakshadweep, Maharashtra and Tripura relate to 29<sup>th</sup> January, 2022.

**Forecasts of daily cases and filtered daily growth rates of cases for states and union territories : 30 January to 12 February 2022**

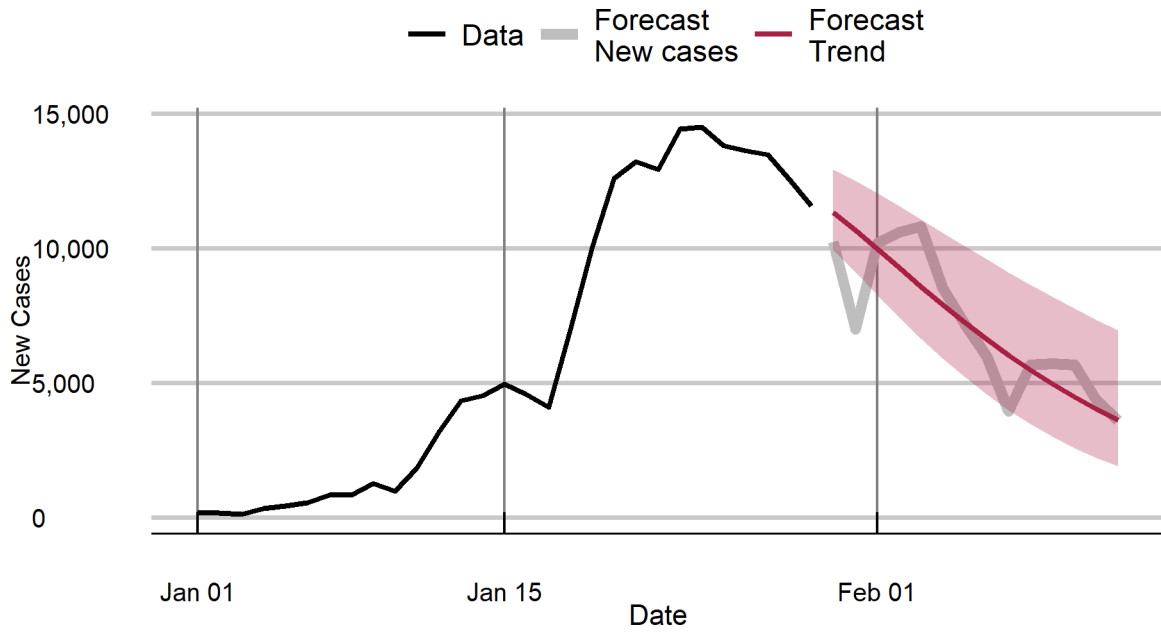
**A & N Islands**



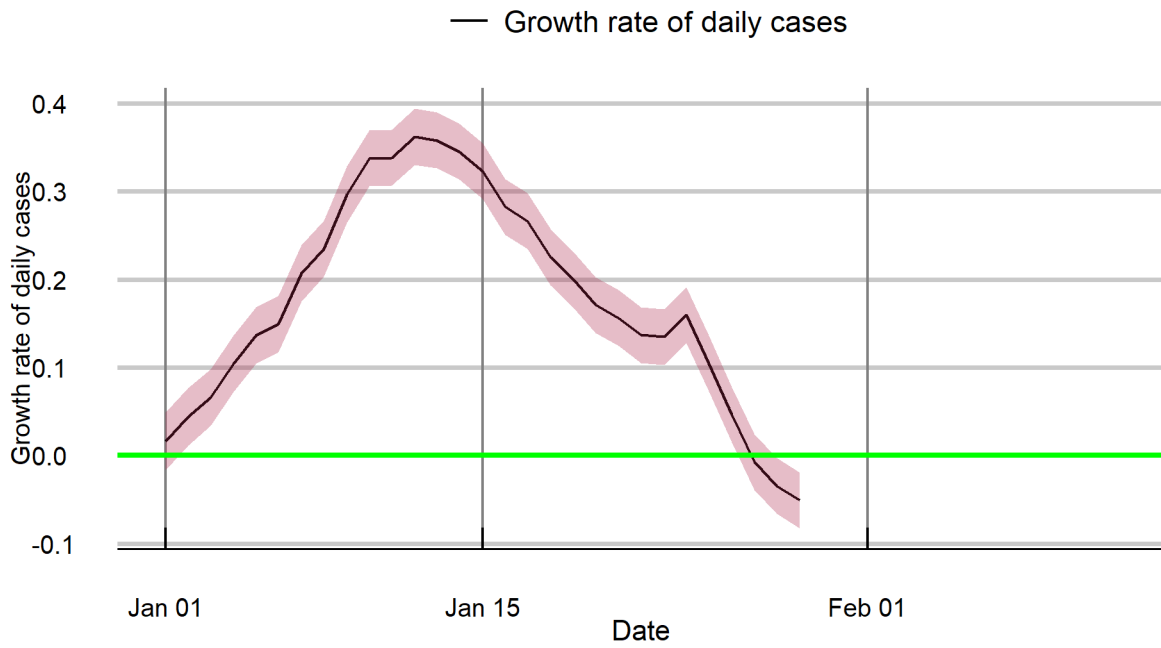
**A & N Islands**



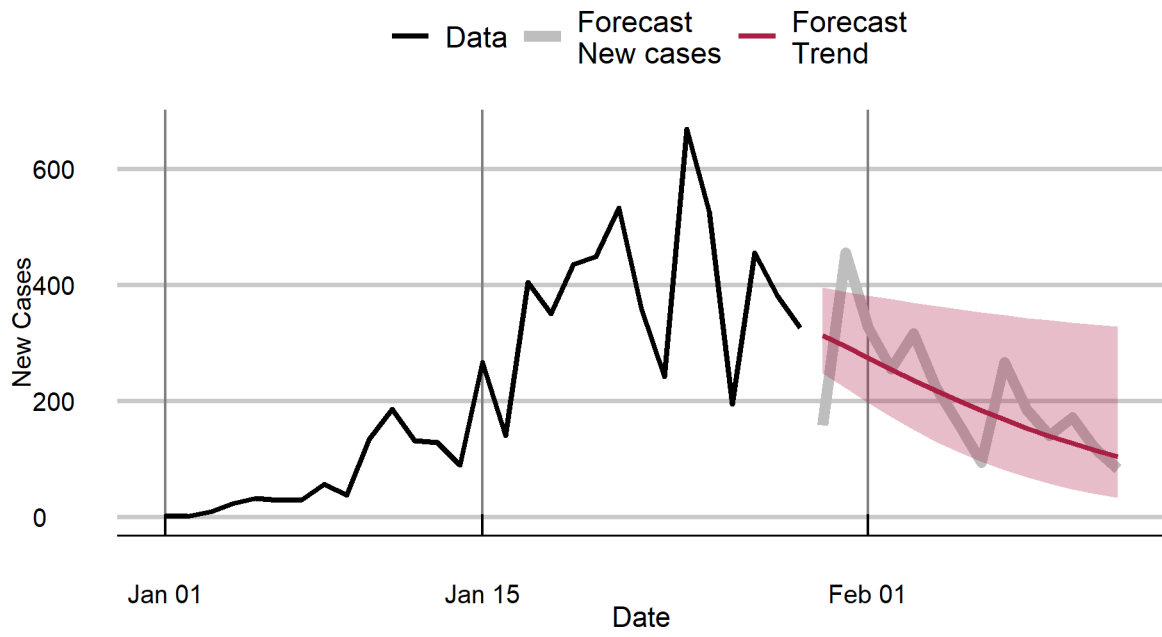
### Andhra Pradesh



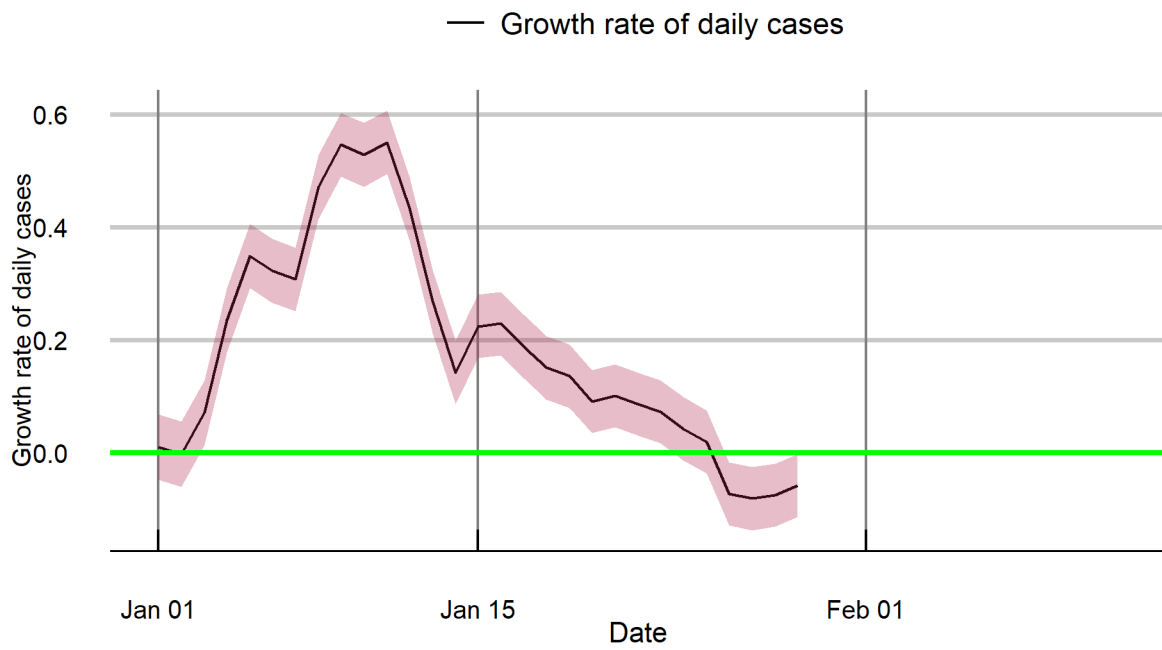
### Andhra Pradesh



## Arunachal Pradesh

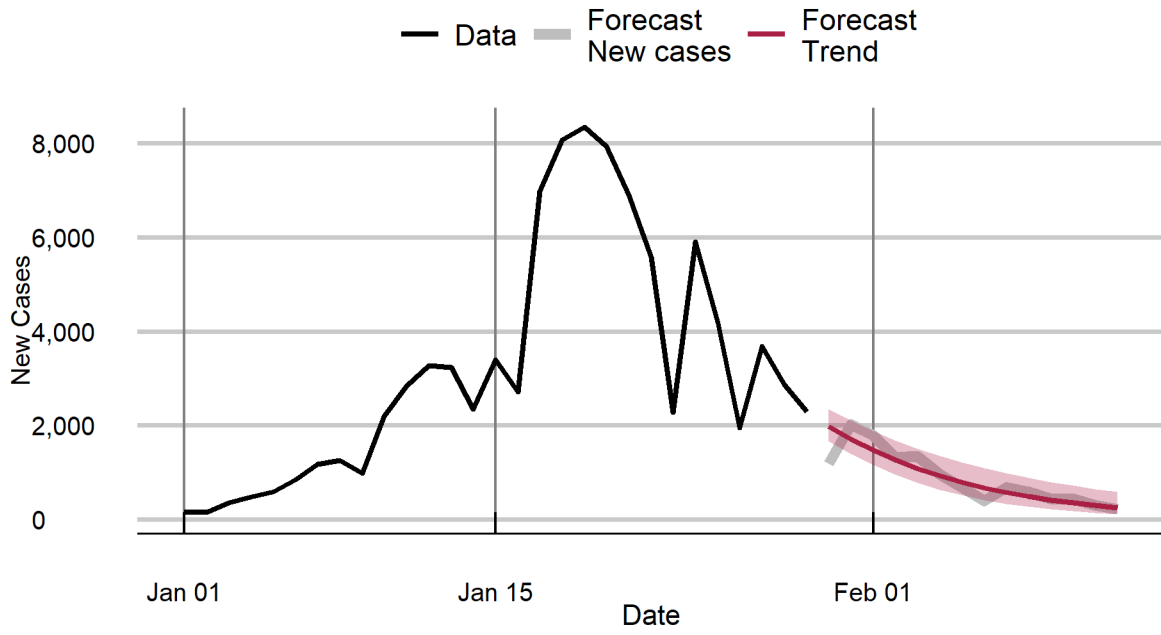


## Arunachal Pradesh

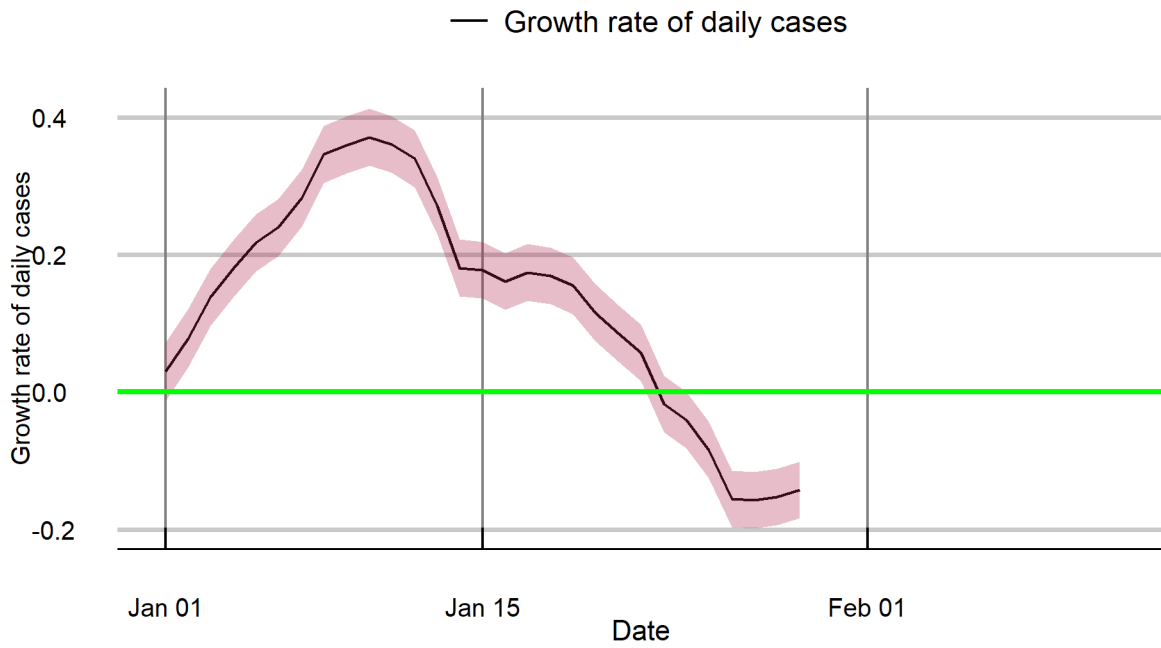




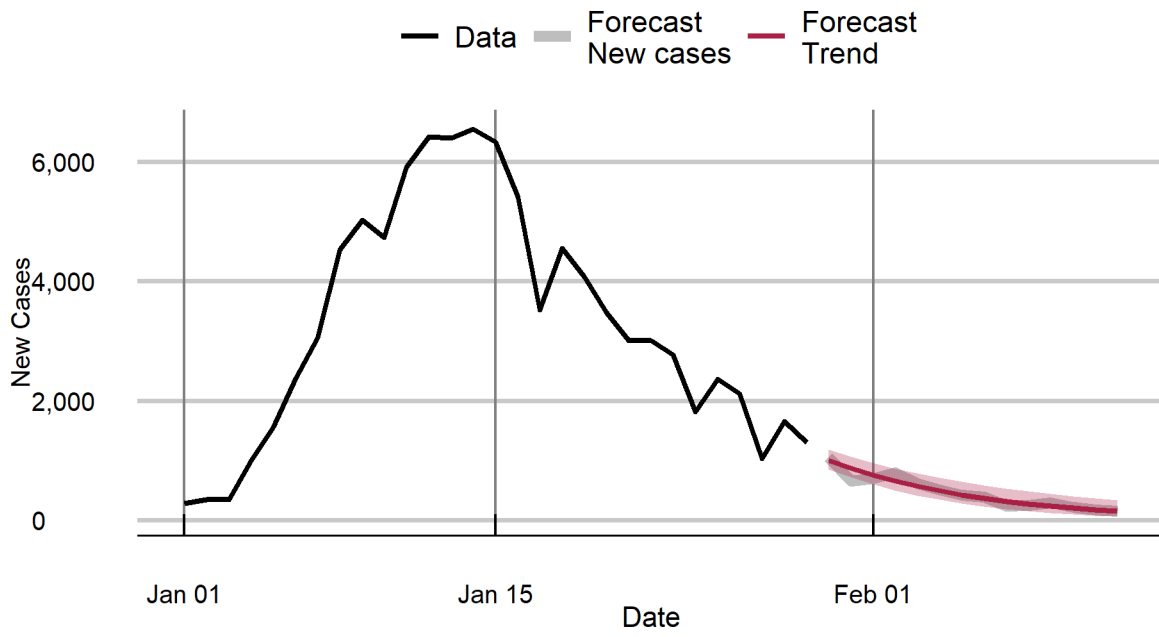
## Assam



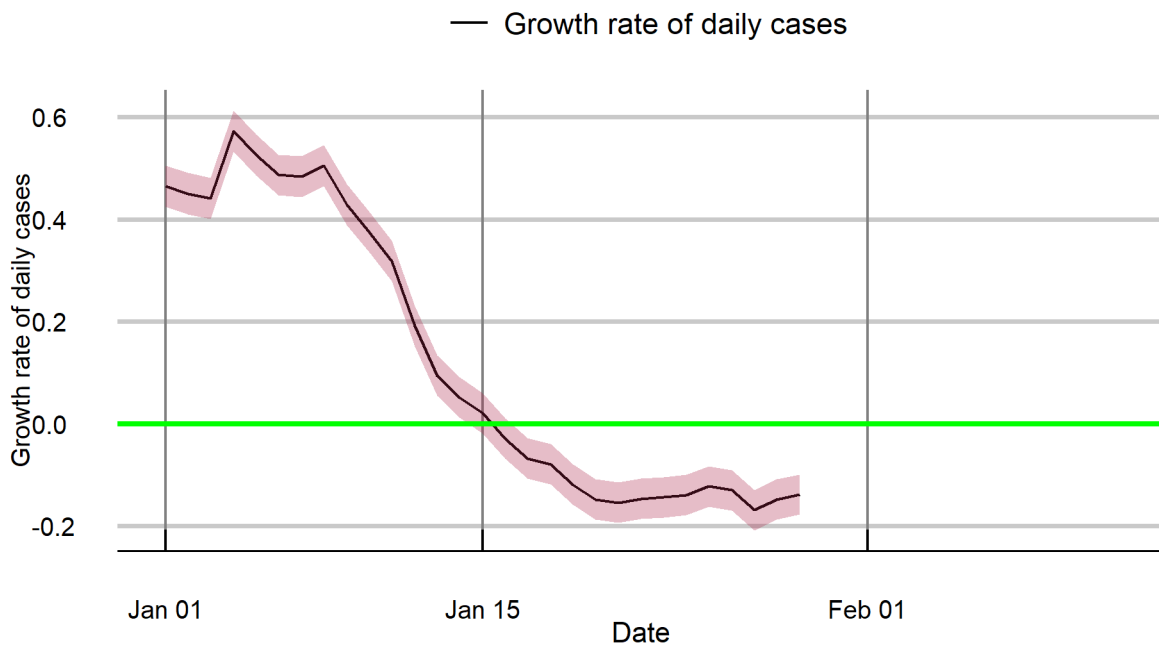
## Assam



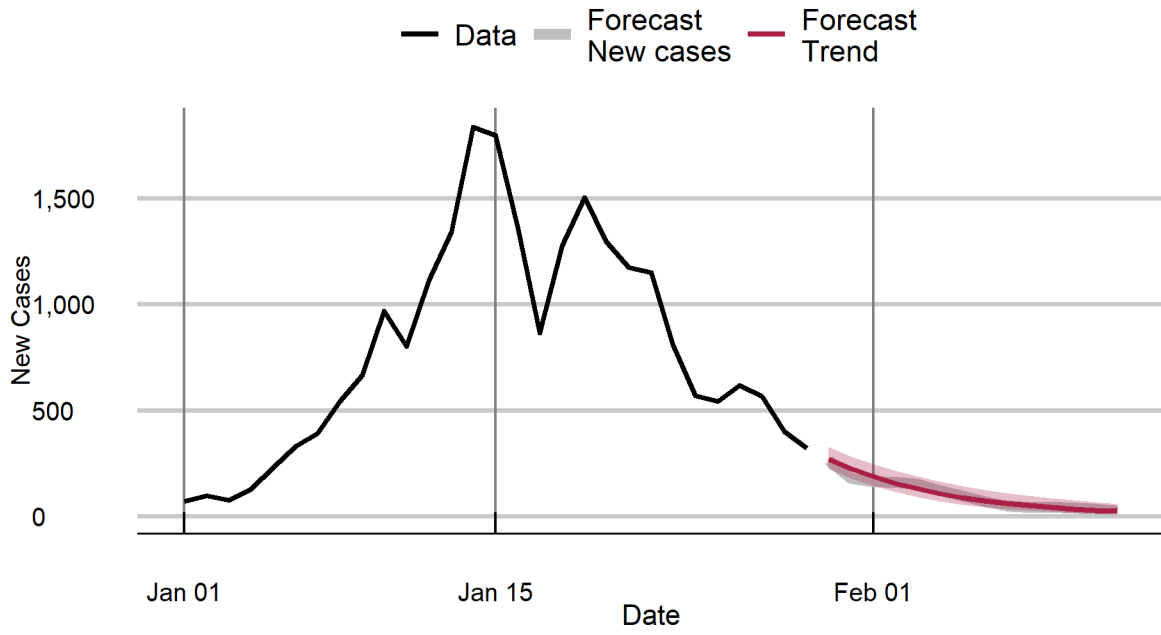
## Bihar



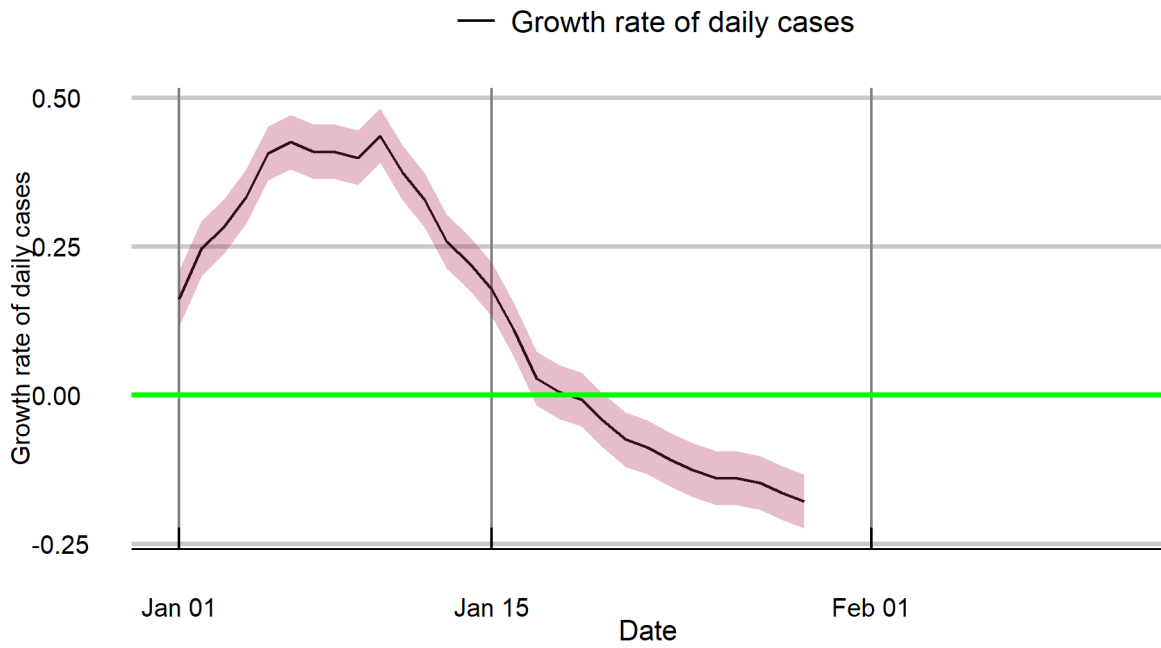
## Bihar



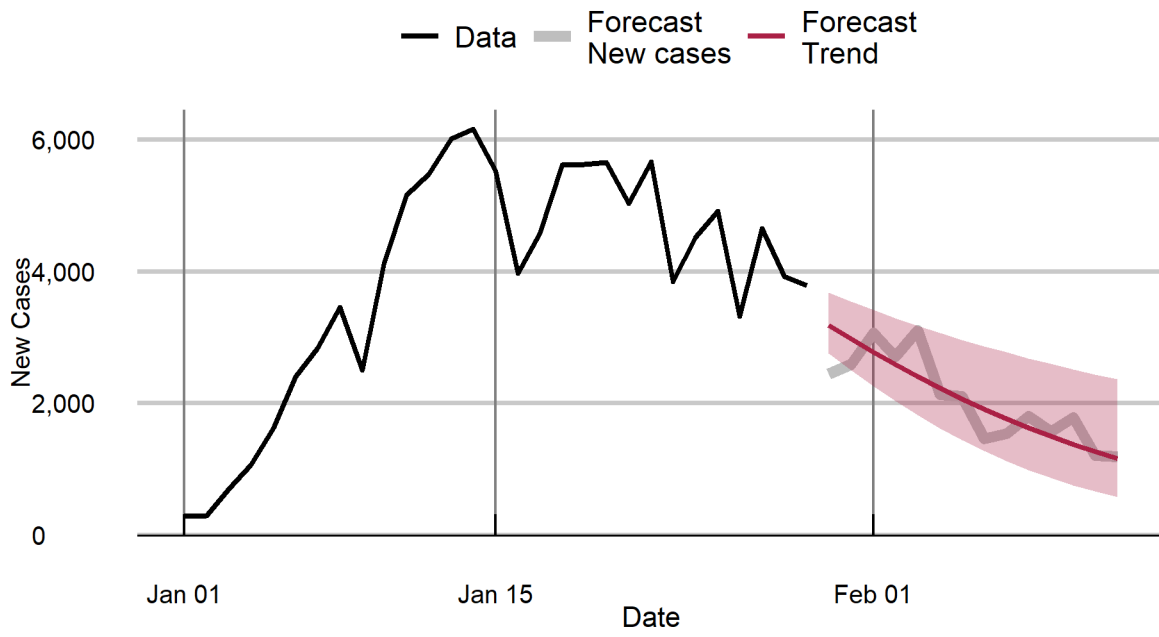
### Chandigarh



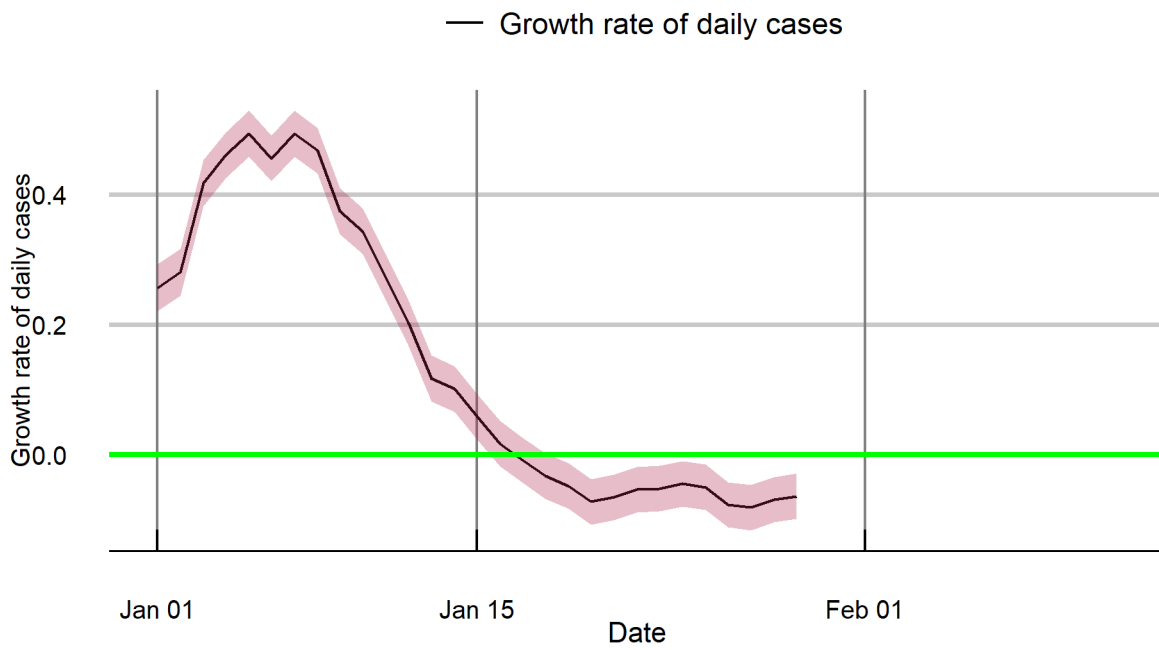
### Chandigarh



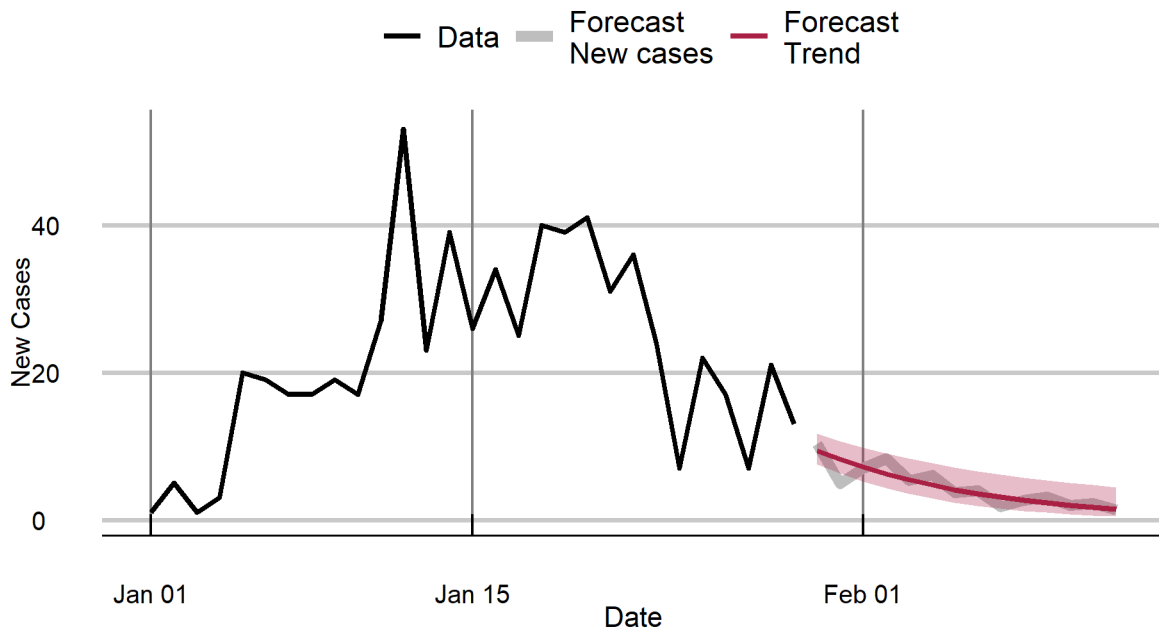
### Chhattisgarh



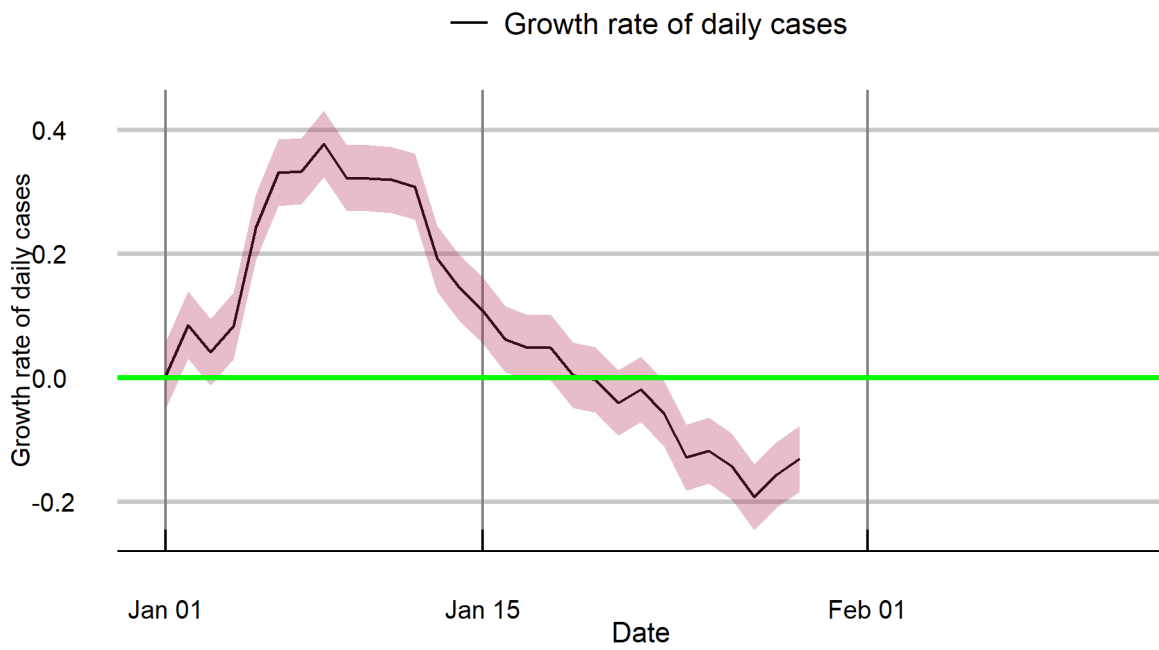
### Chhattisgarh



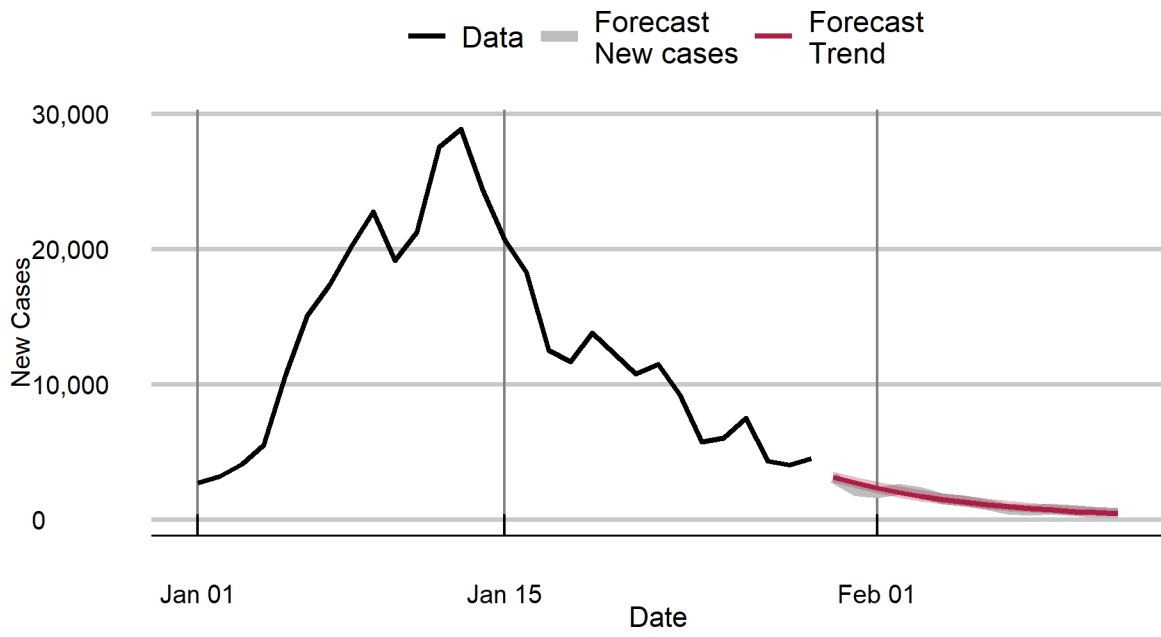
## D & N H



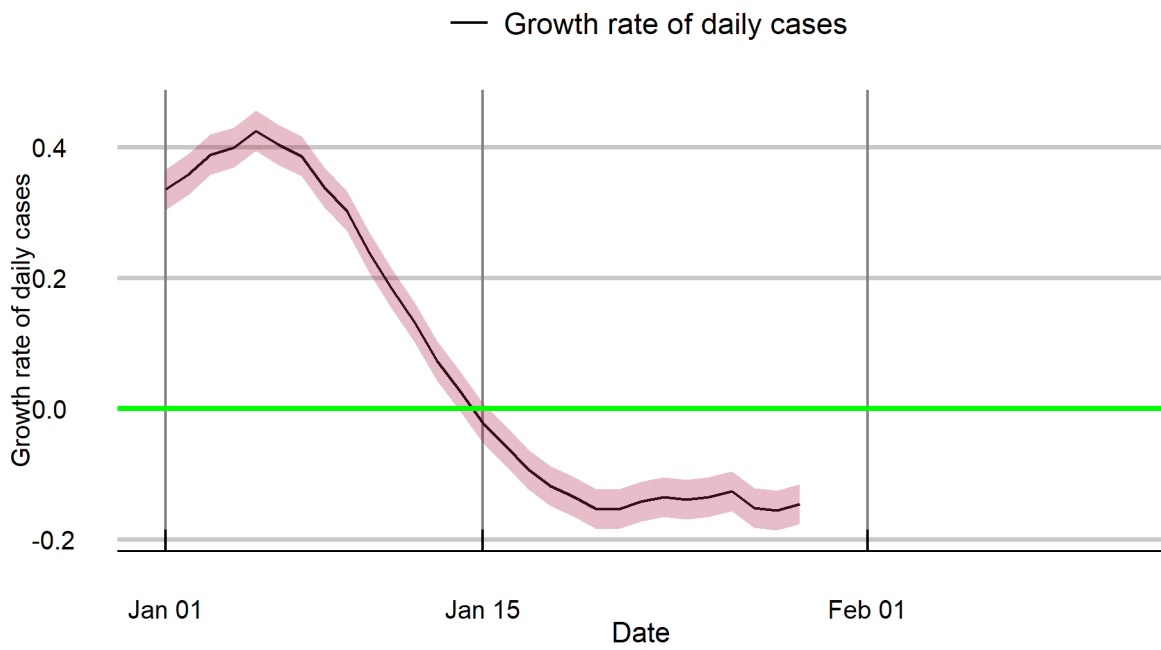
## D & N H



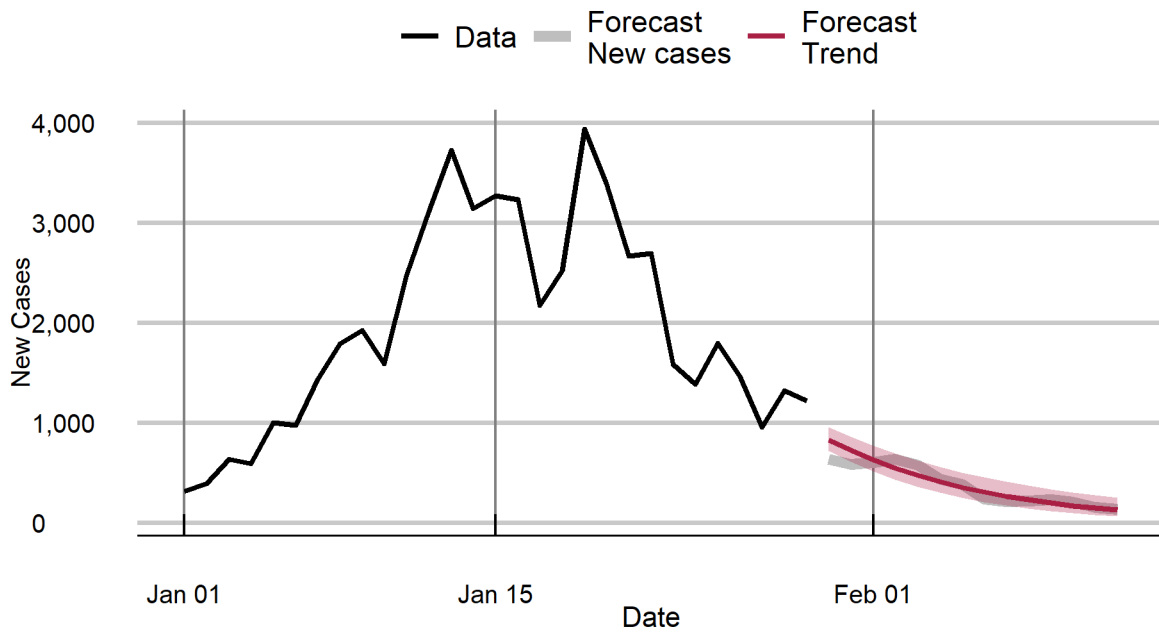
### Delhi



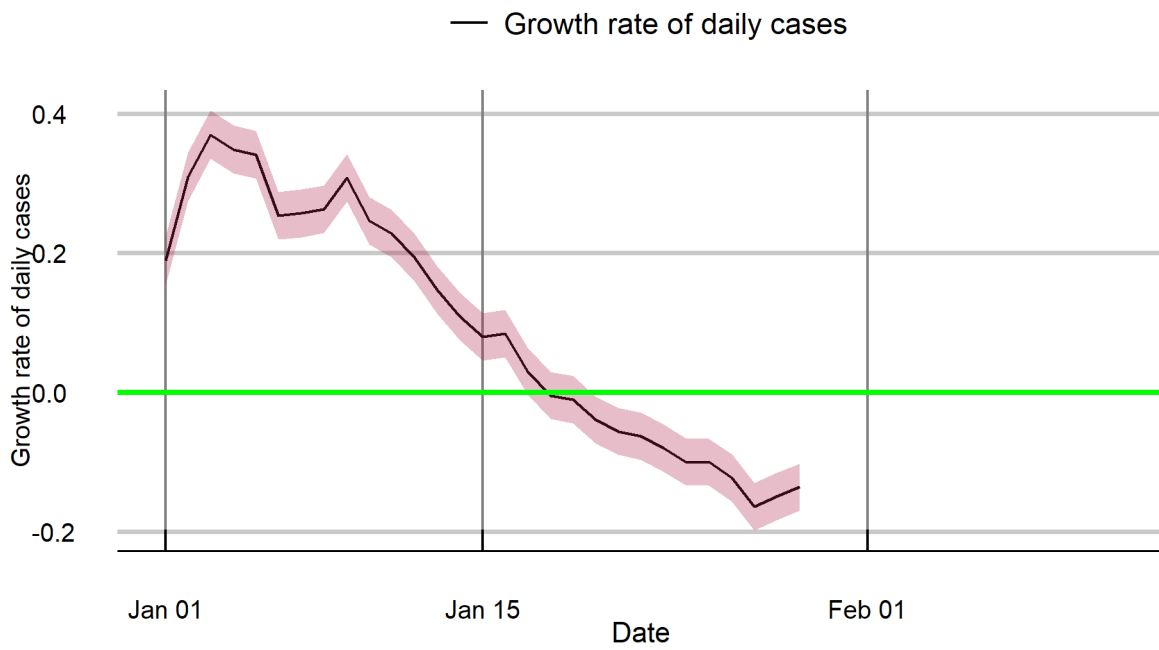
### Delhi



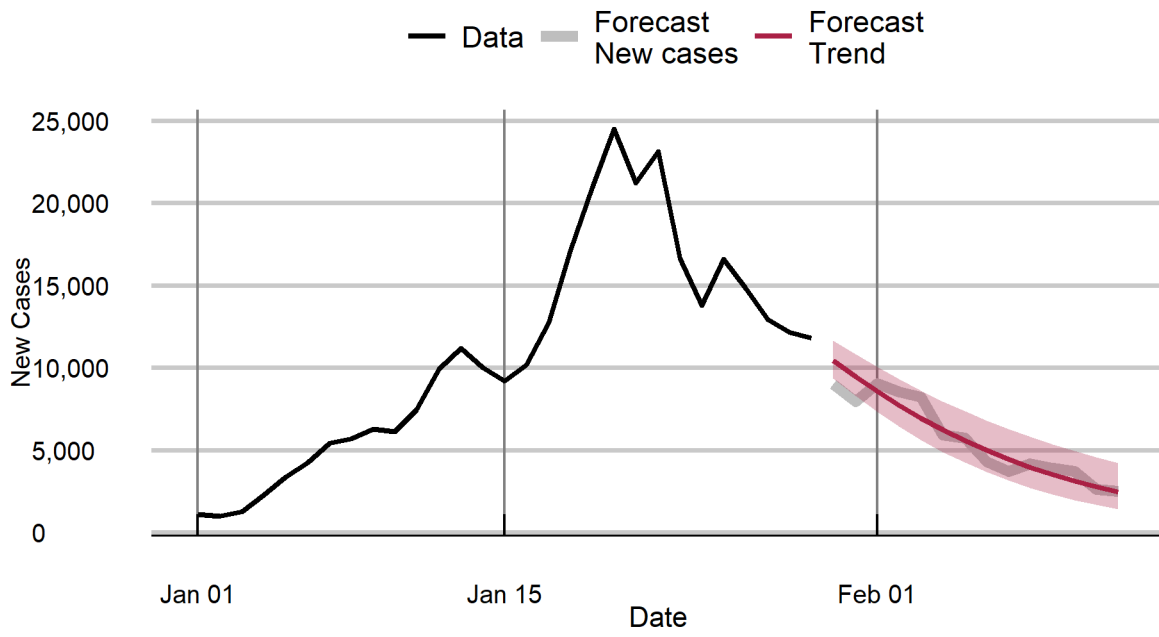
## Goa



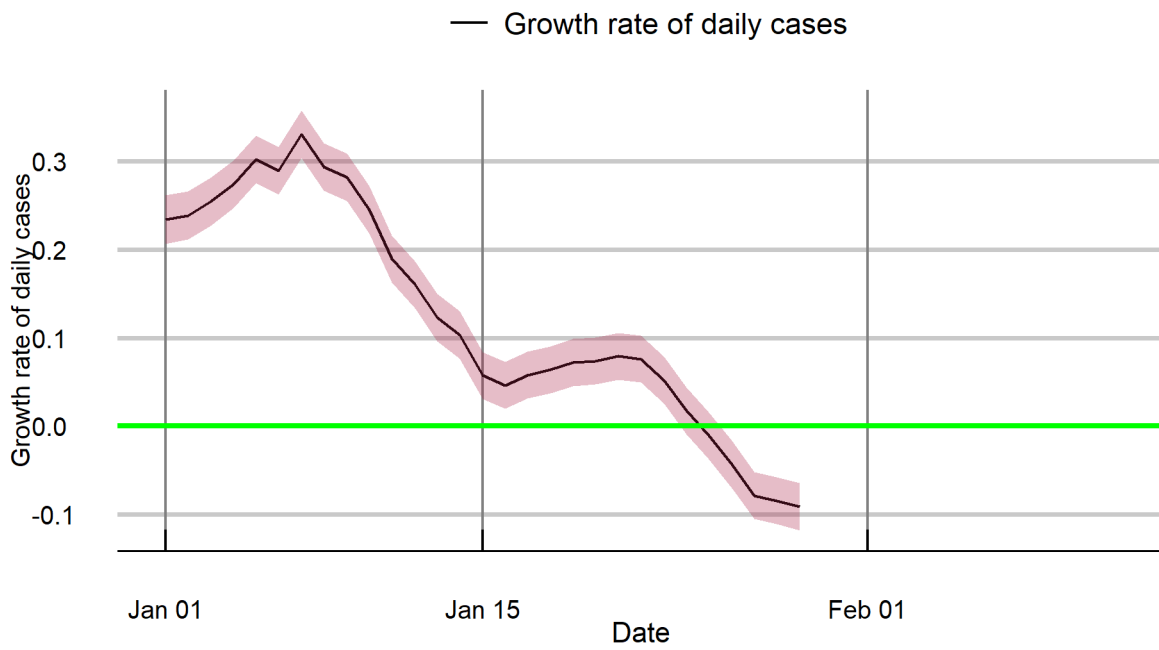
## Goa



## Gujarat

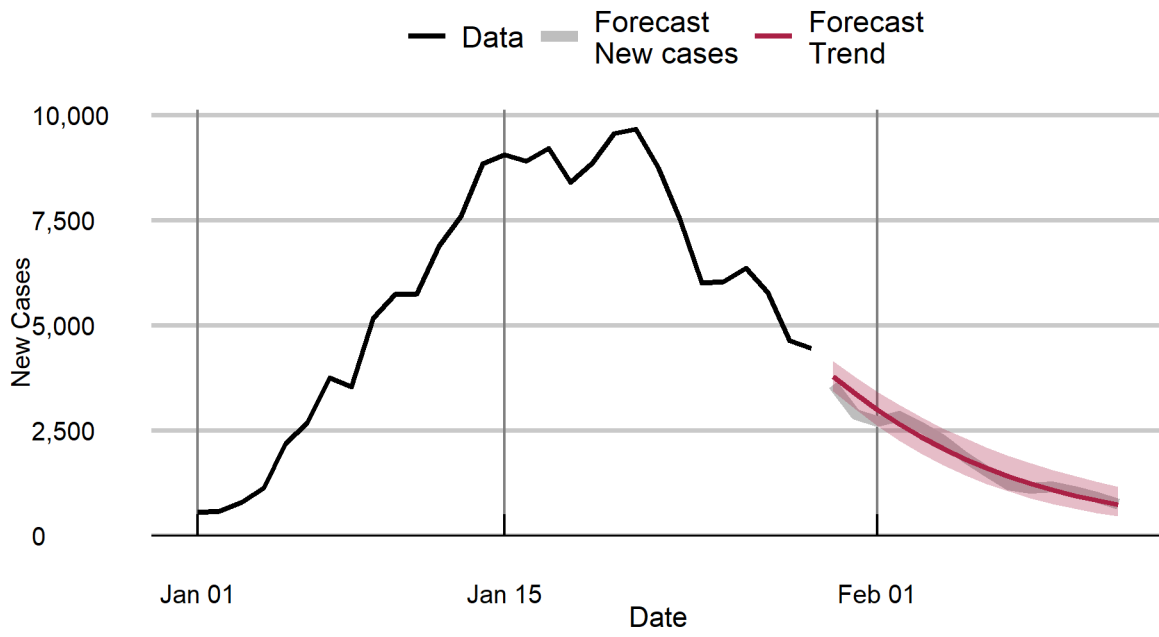


## Gujarat

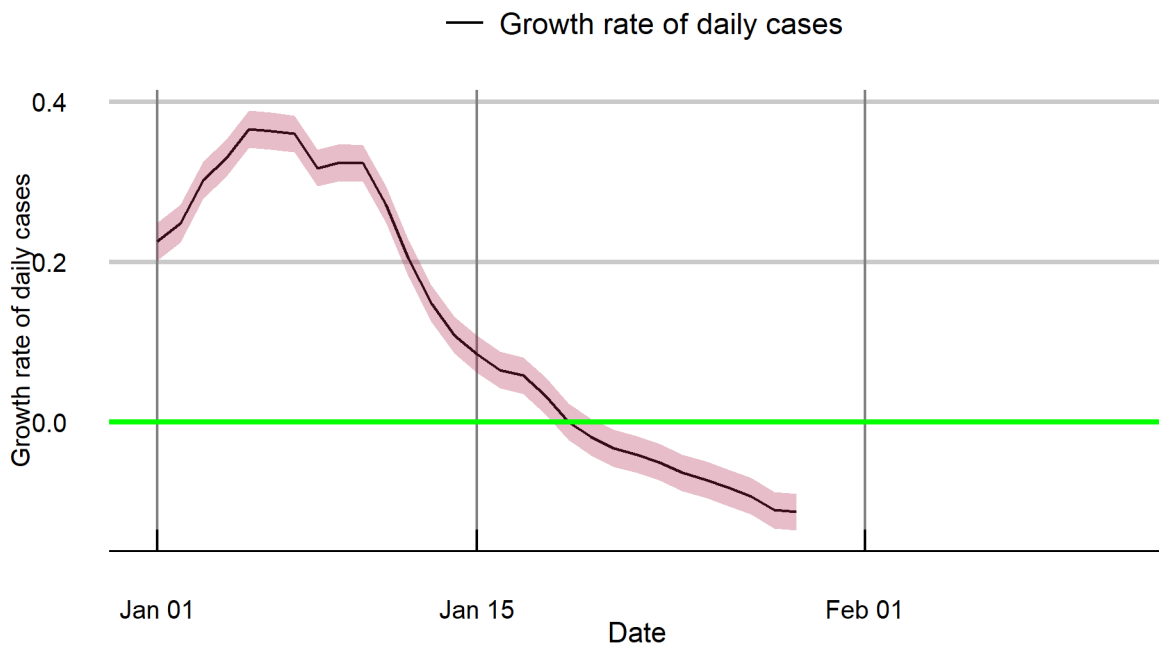




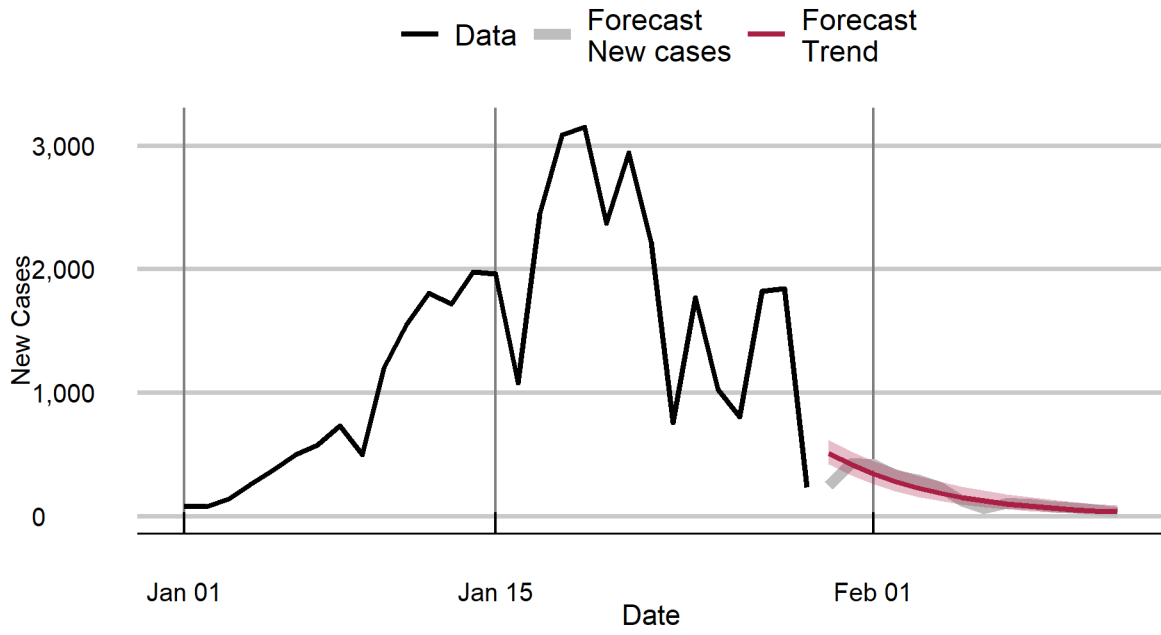
## Haryana



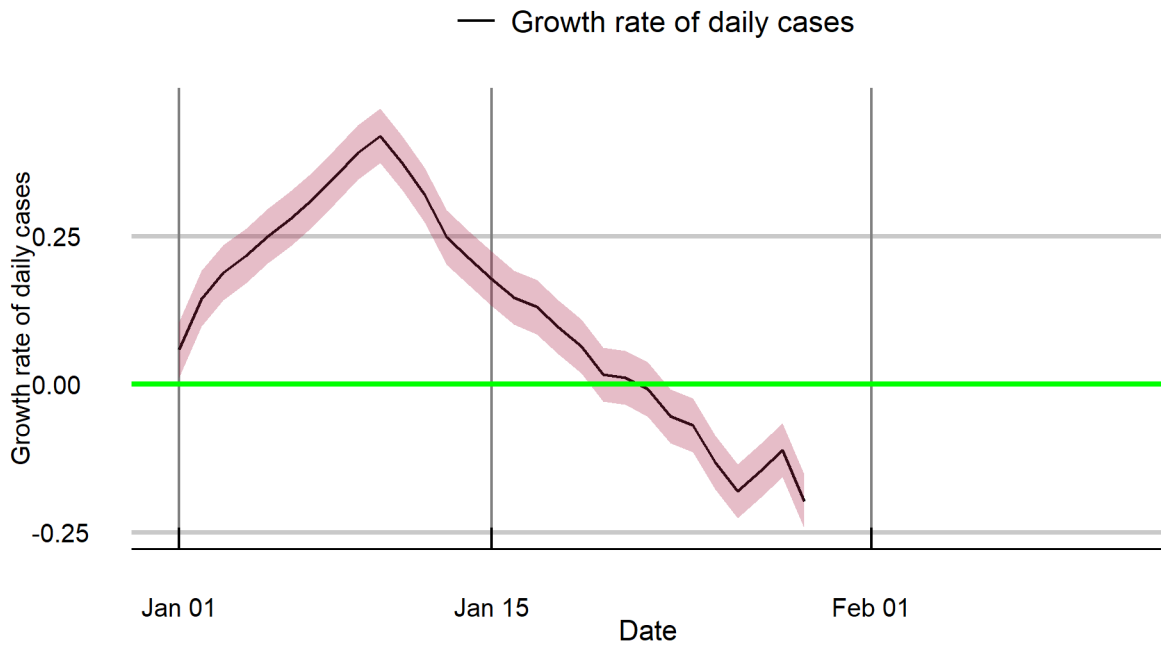
## Haryana



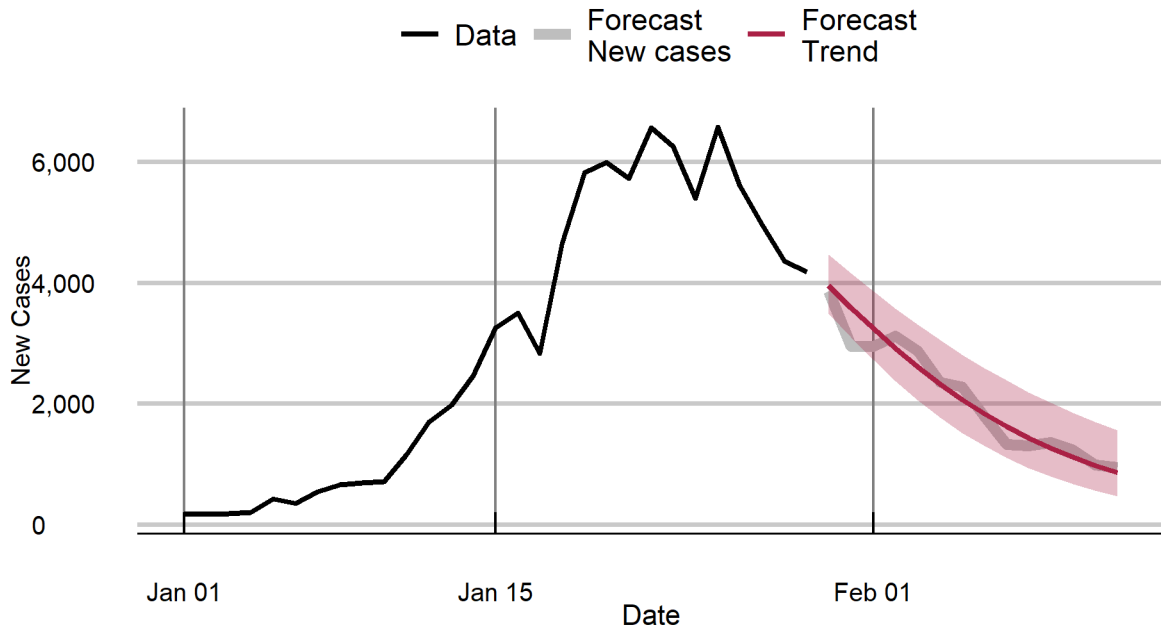
## Himachal Pradesh



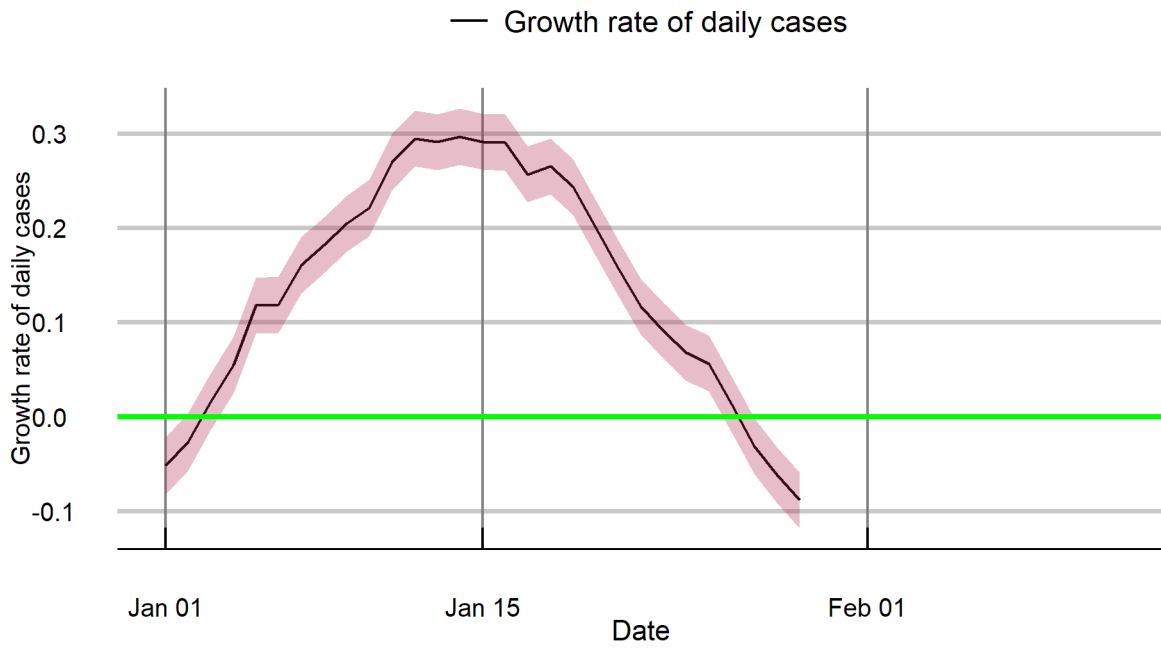
## Himachal Pradesh



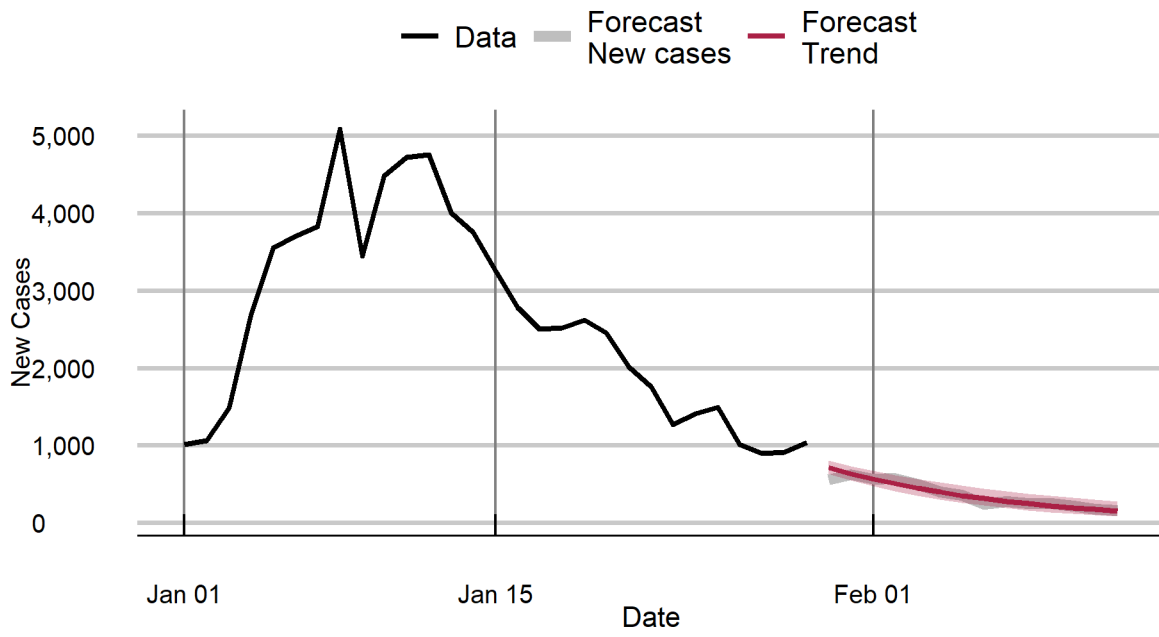
### Jammu & Kashmir



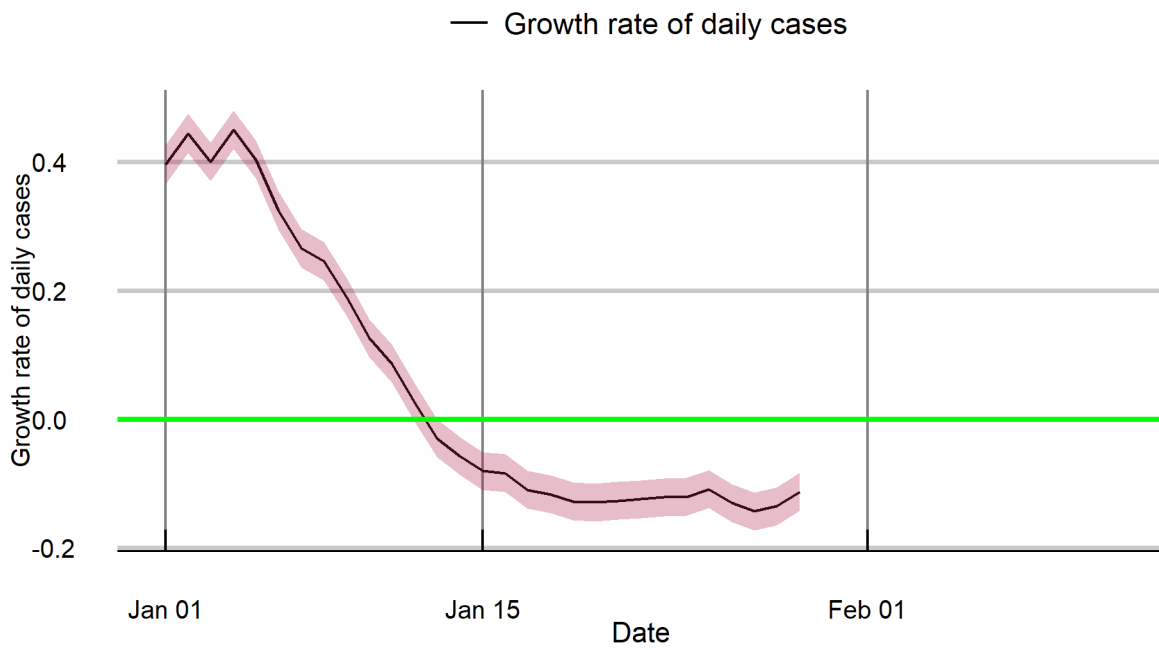
### Jammu & Kashmir



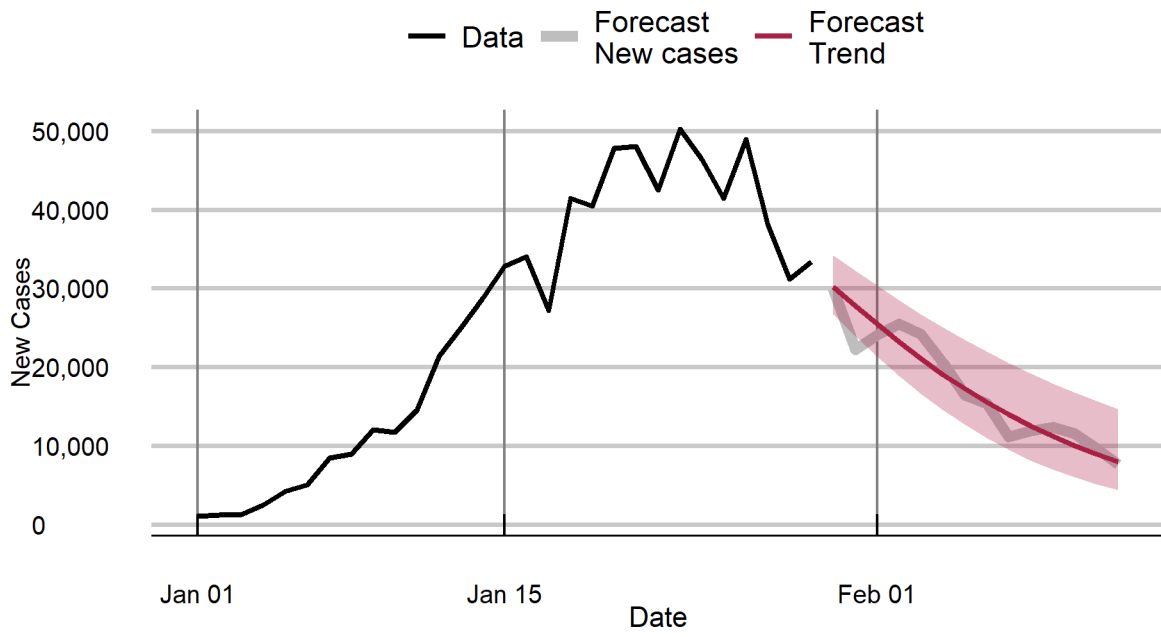
## Jharkhand



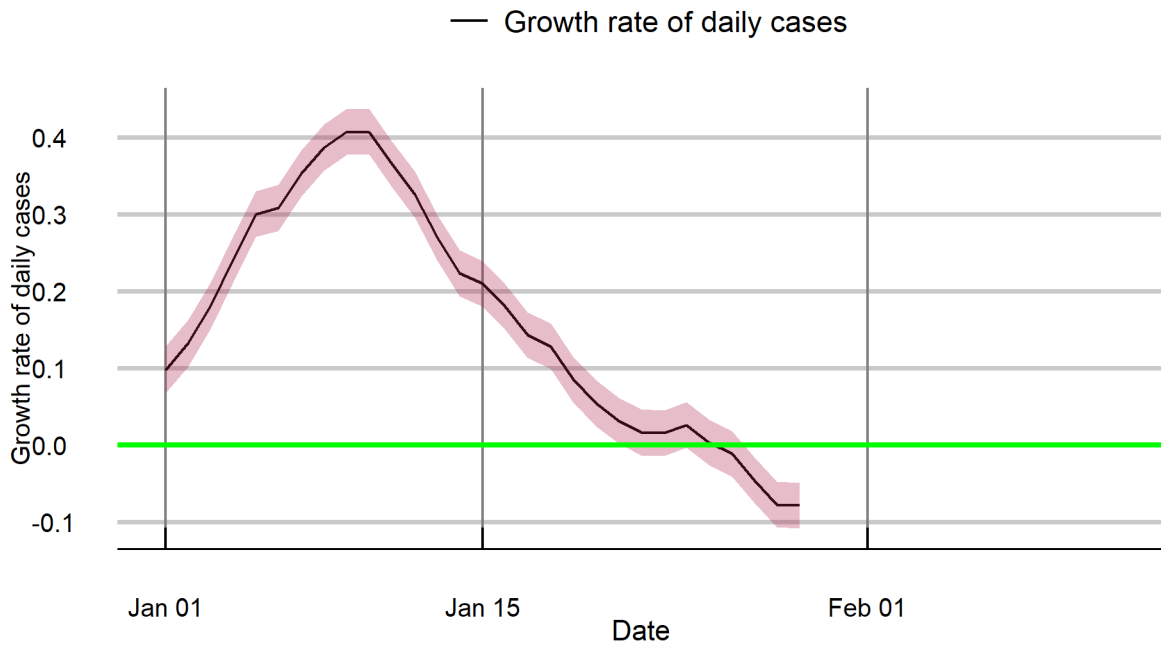
## Jharkhand



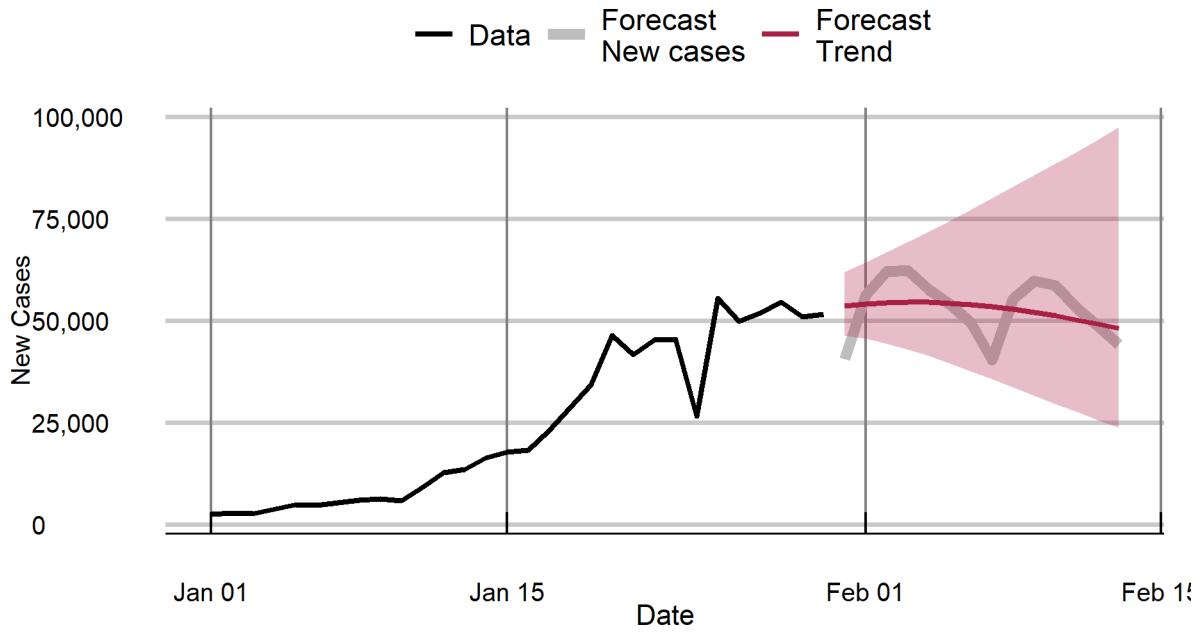
### Karnataka



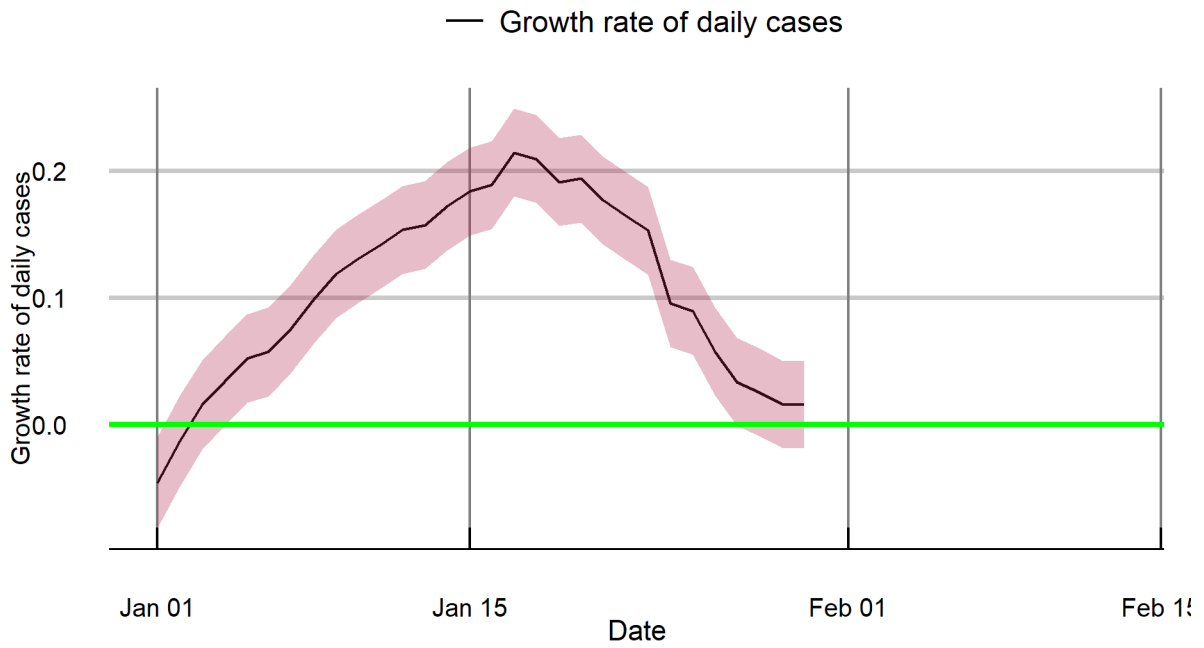
### Karnataka



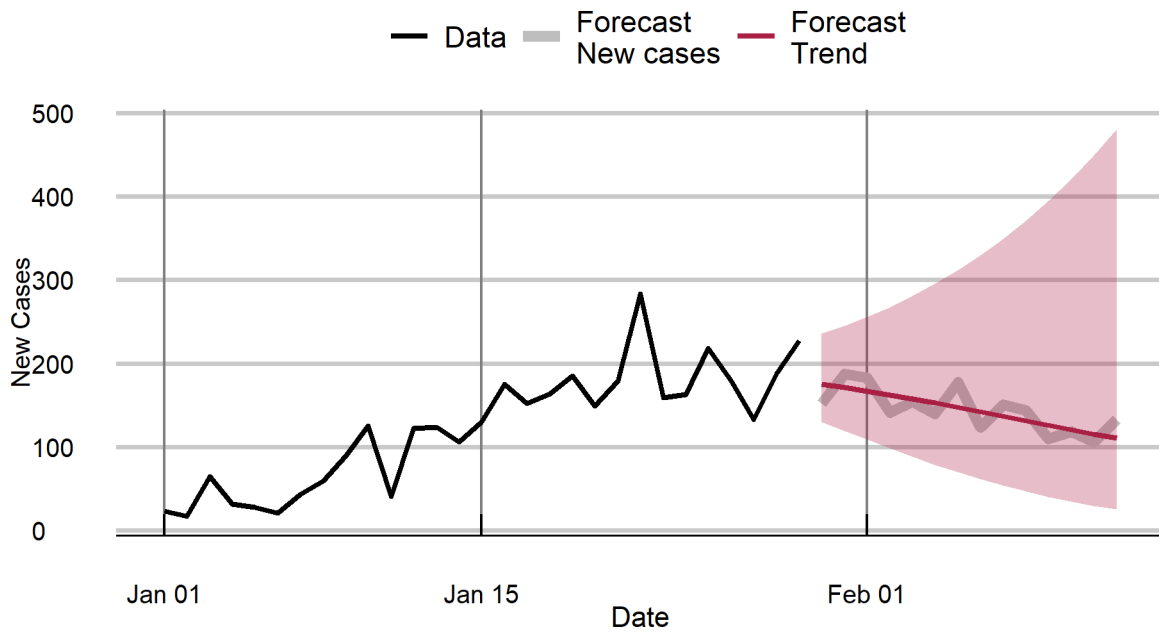
## Kerala



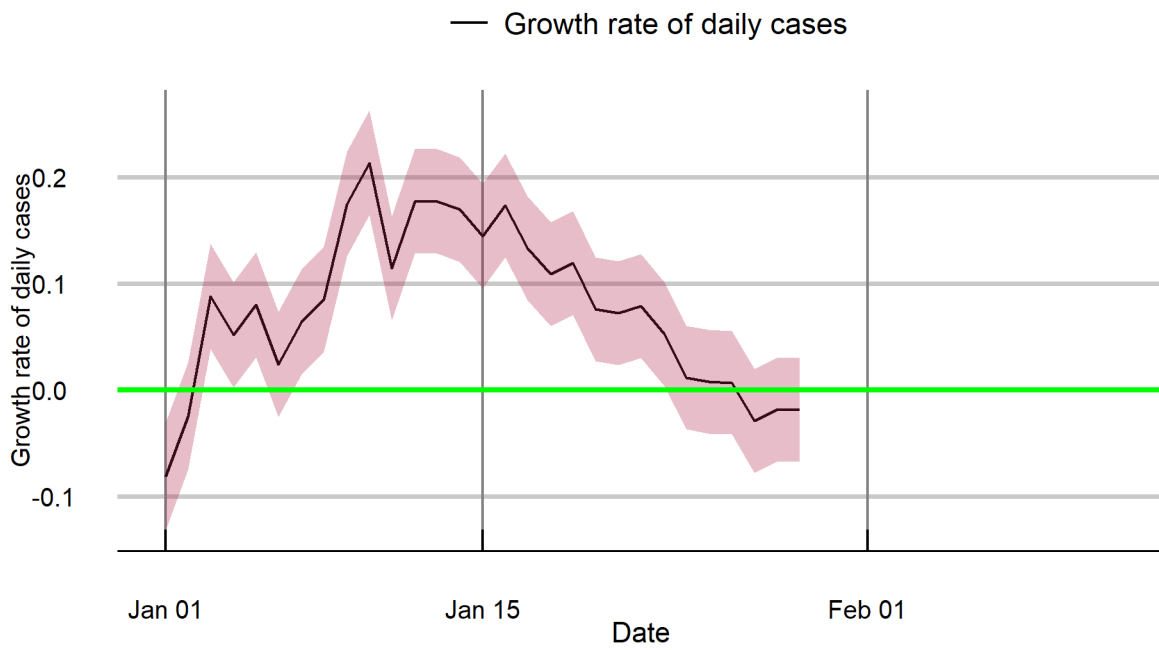
## Kerala



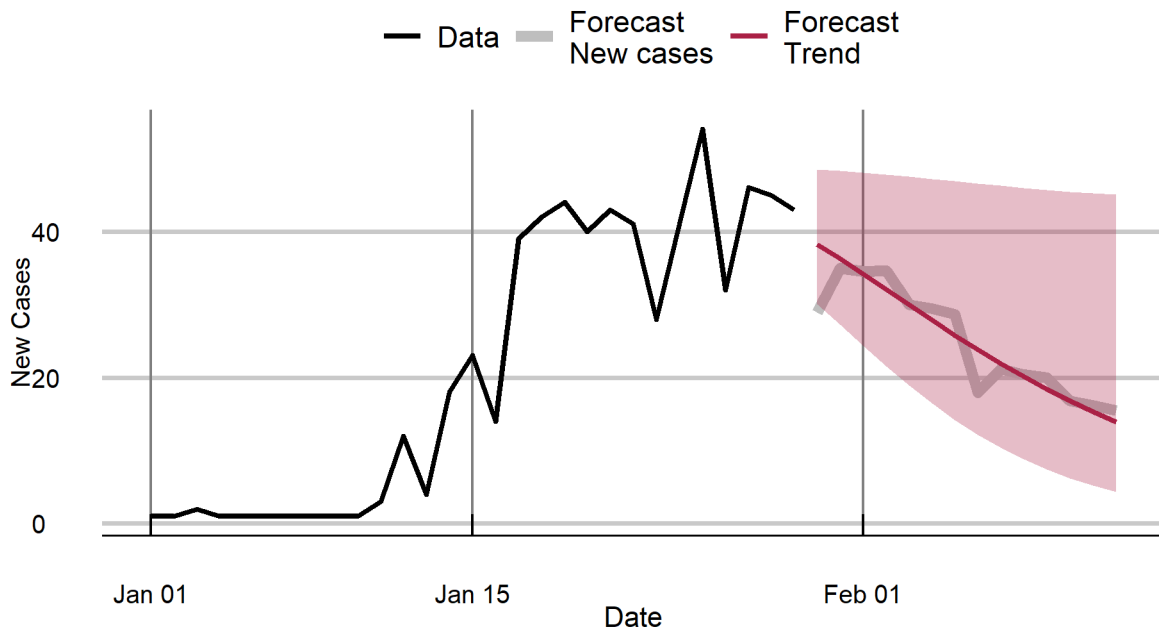
## Ladakh



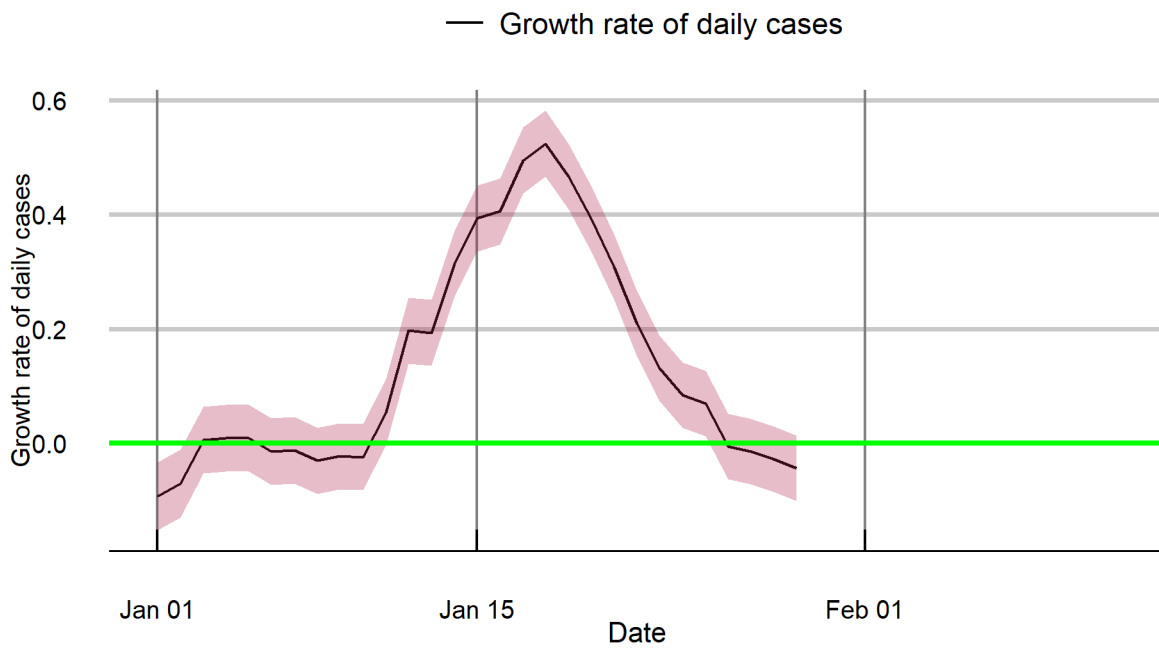
## Ladakh



## Lakshadweep

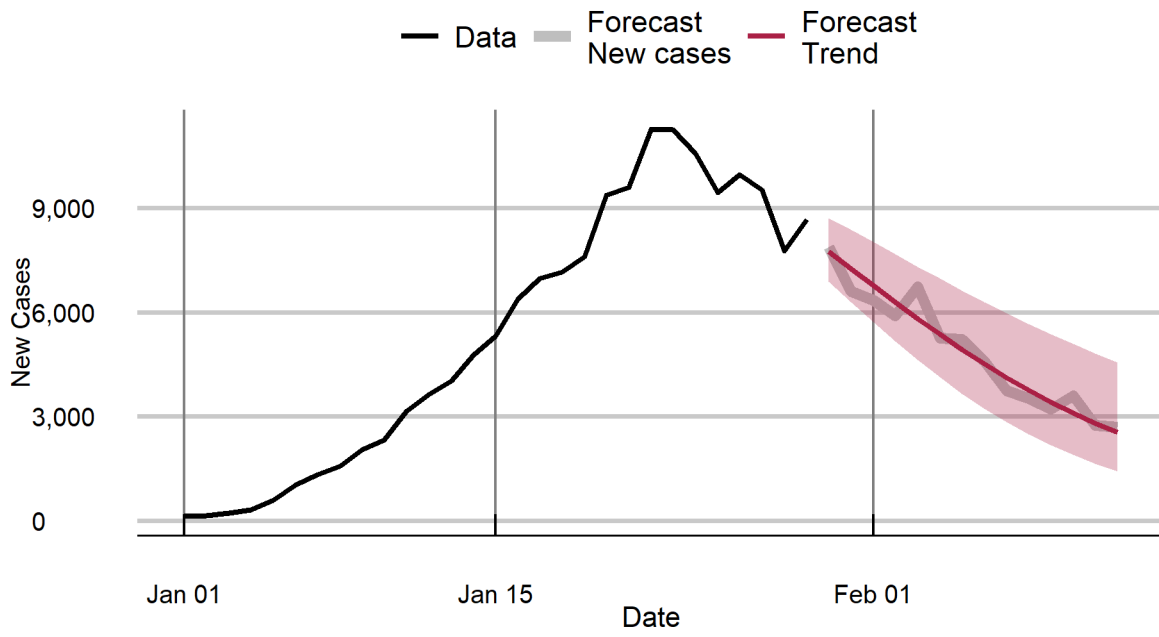


## Lakshadweep

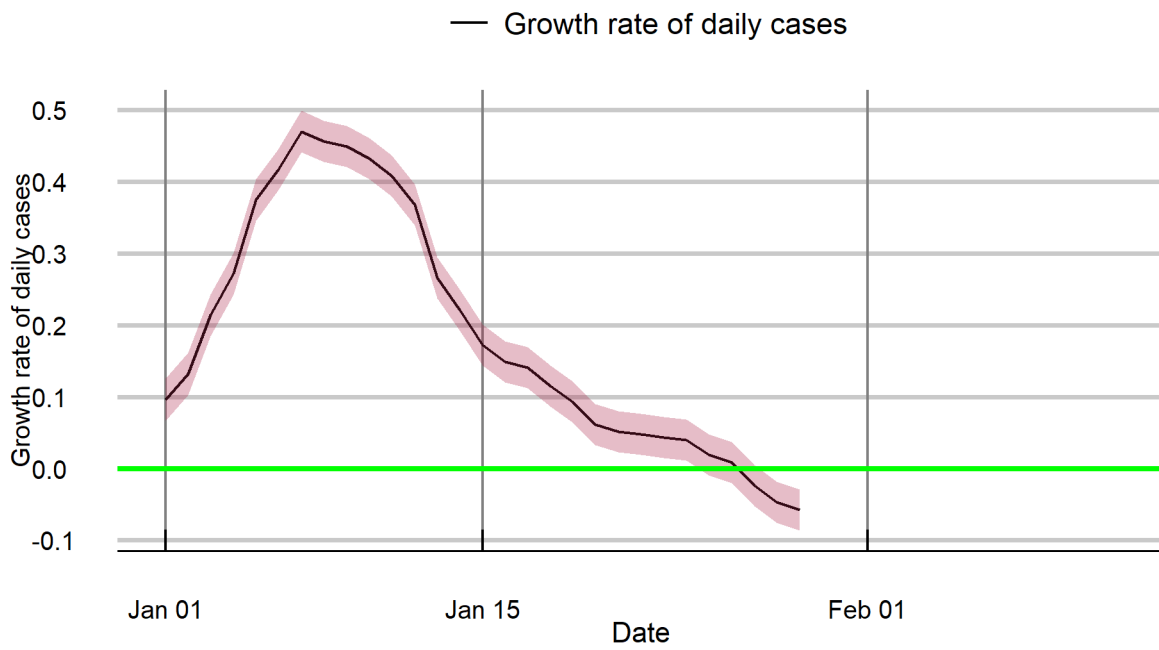




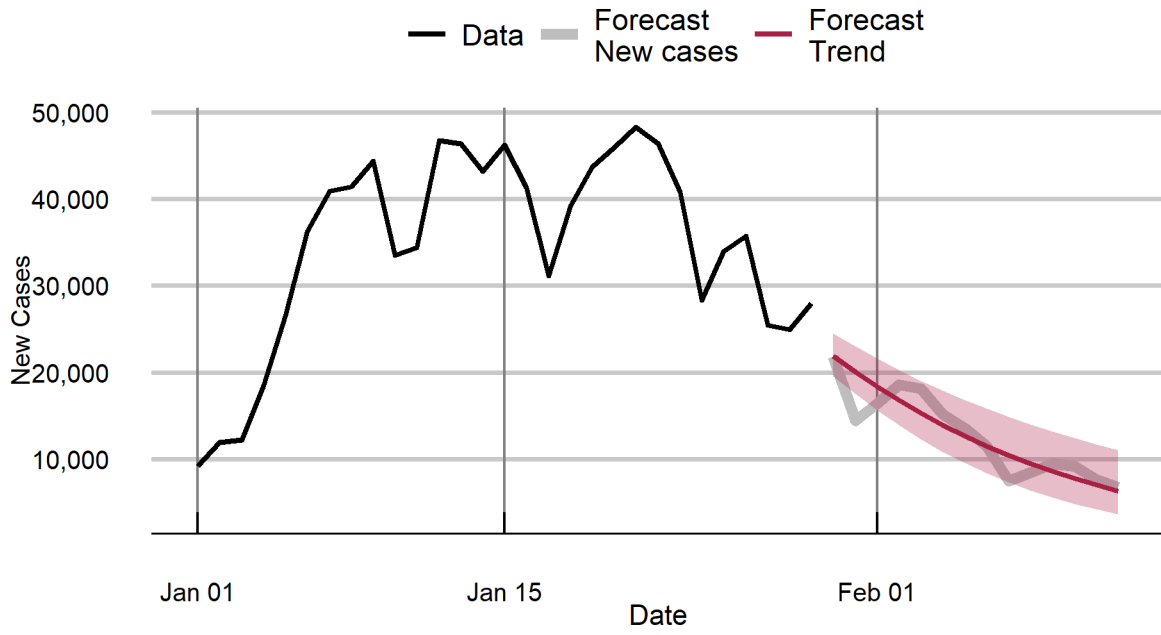
## Madhya Pradesh



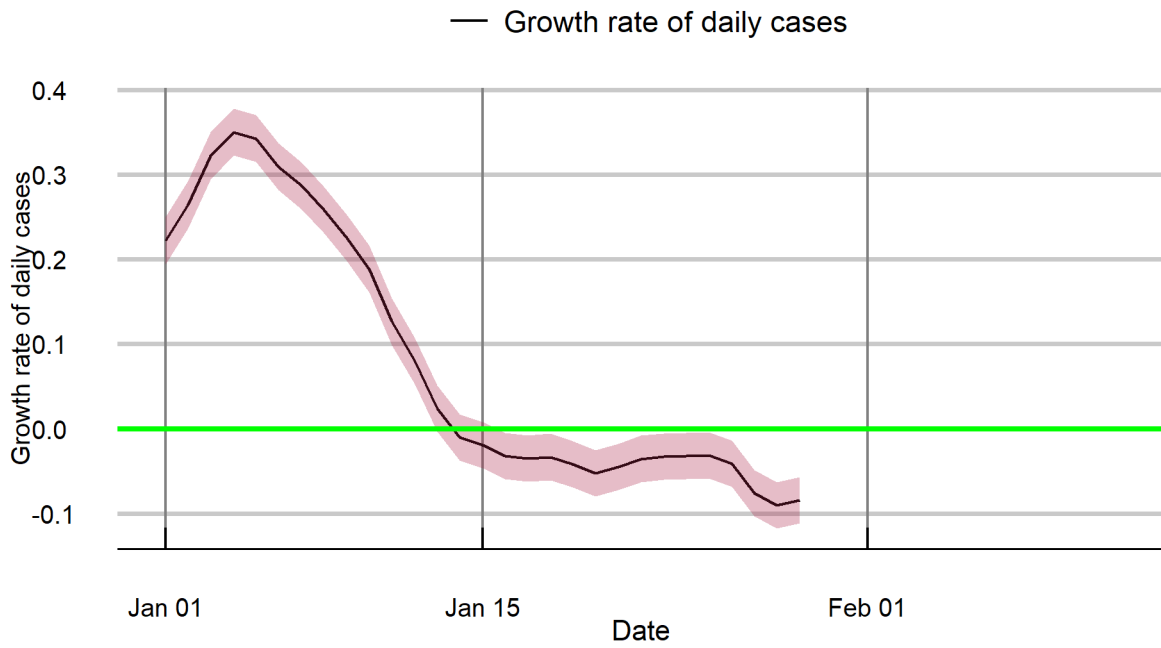
## Madhya Pradesh



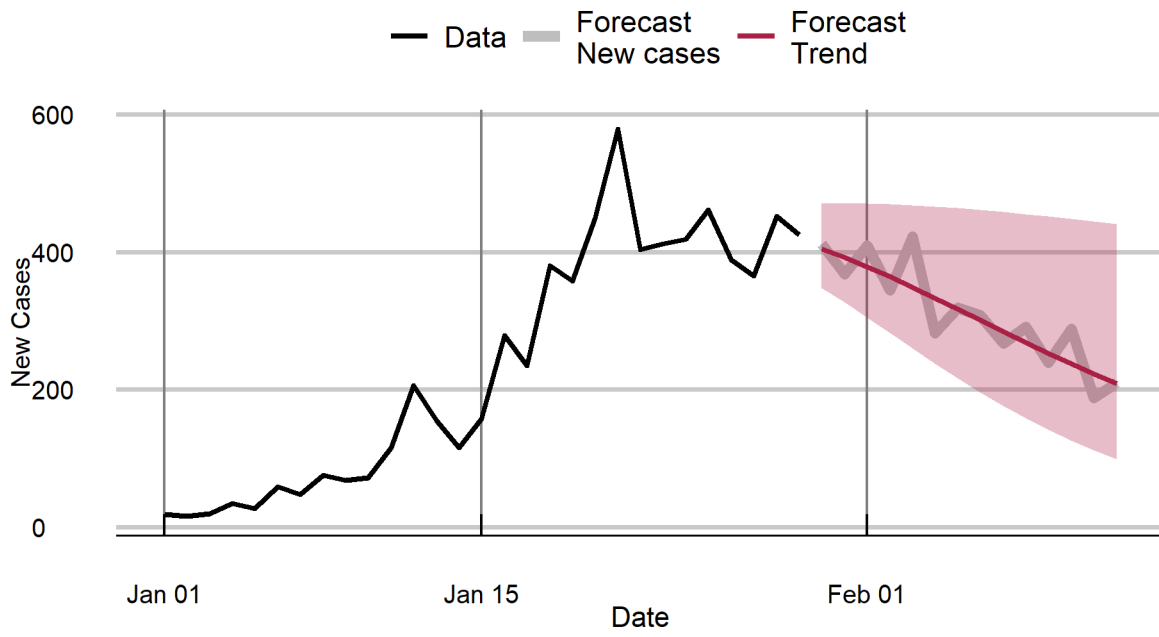
### Maharashtra



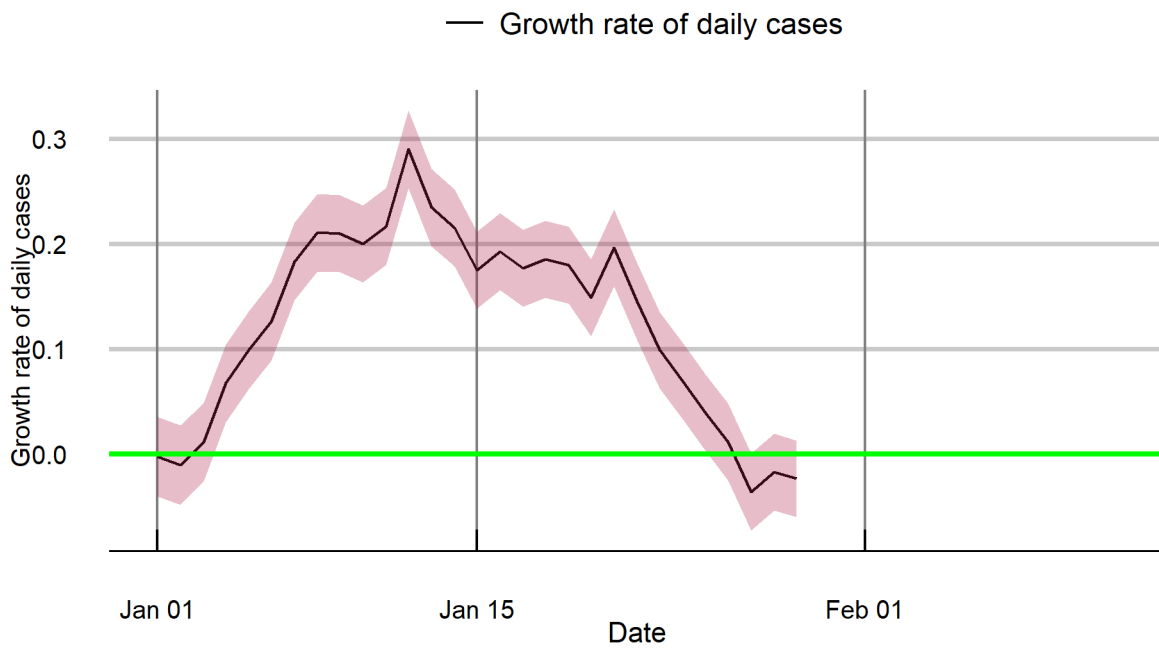
### Maharashtra



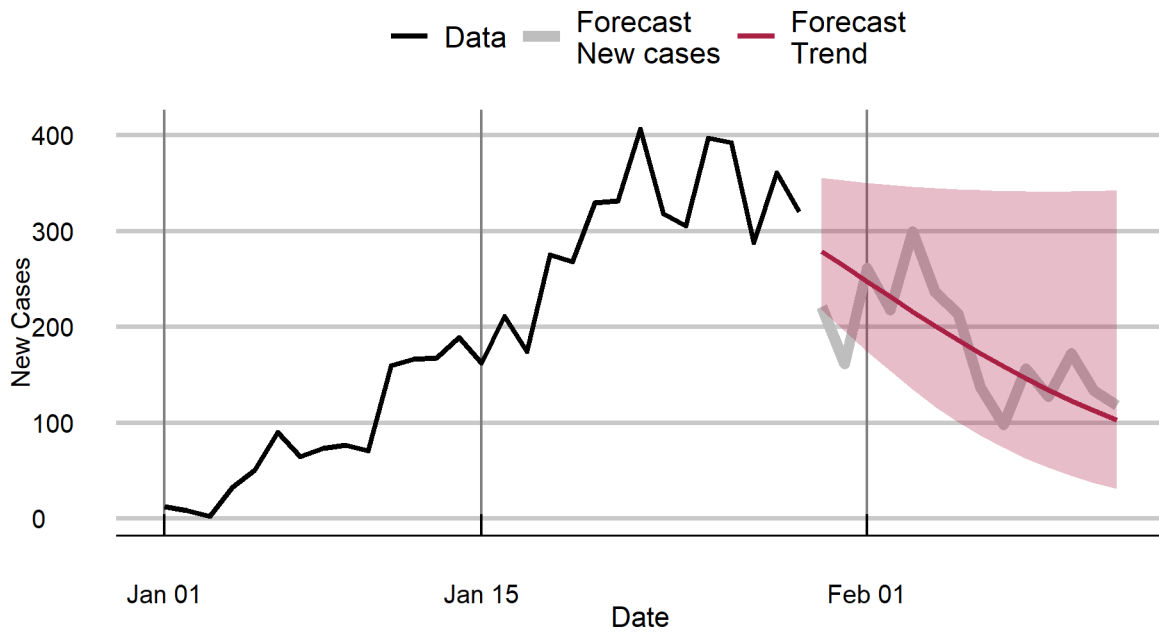
## Manipur



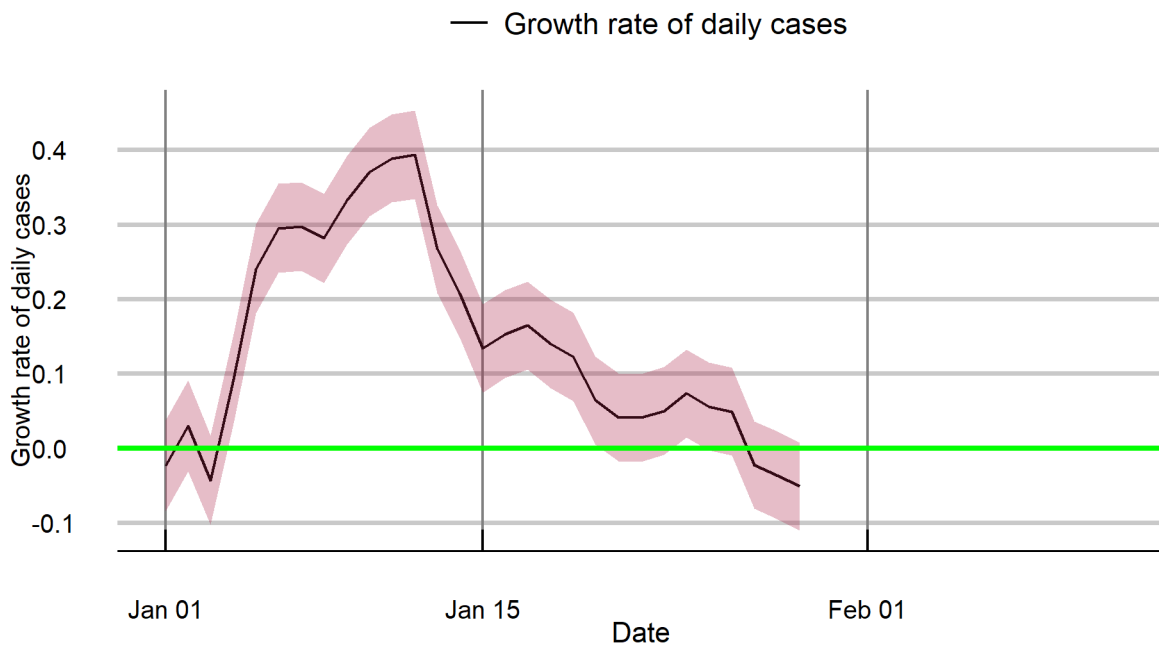
## Manipur



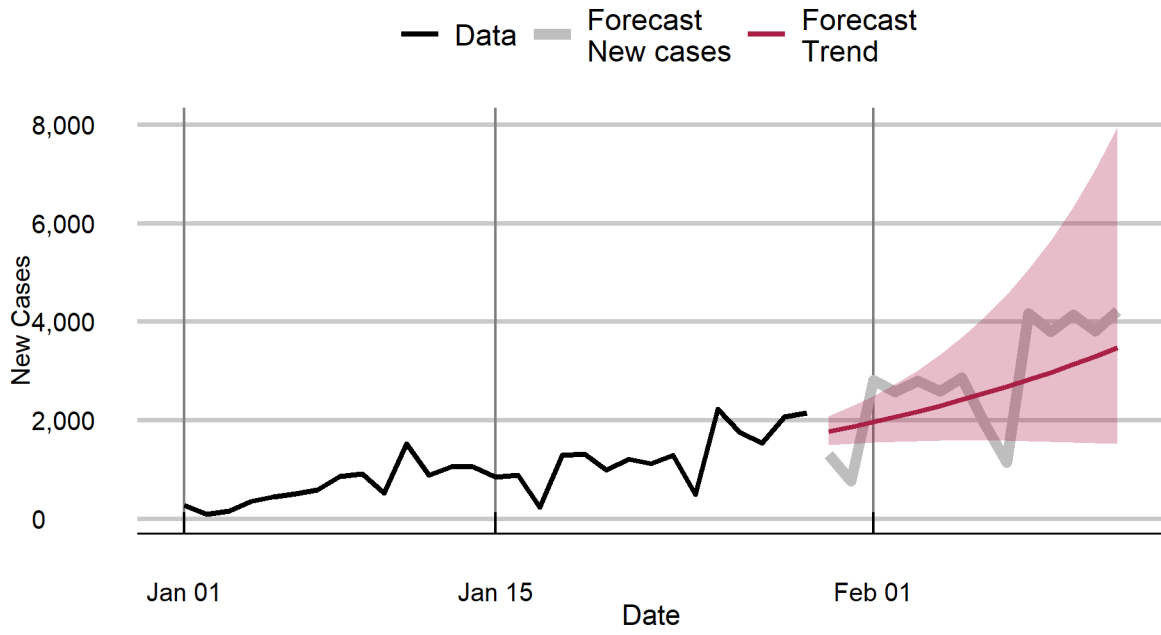
## Meghalaya



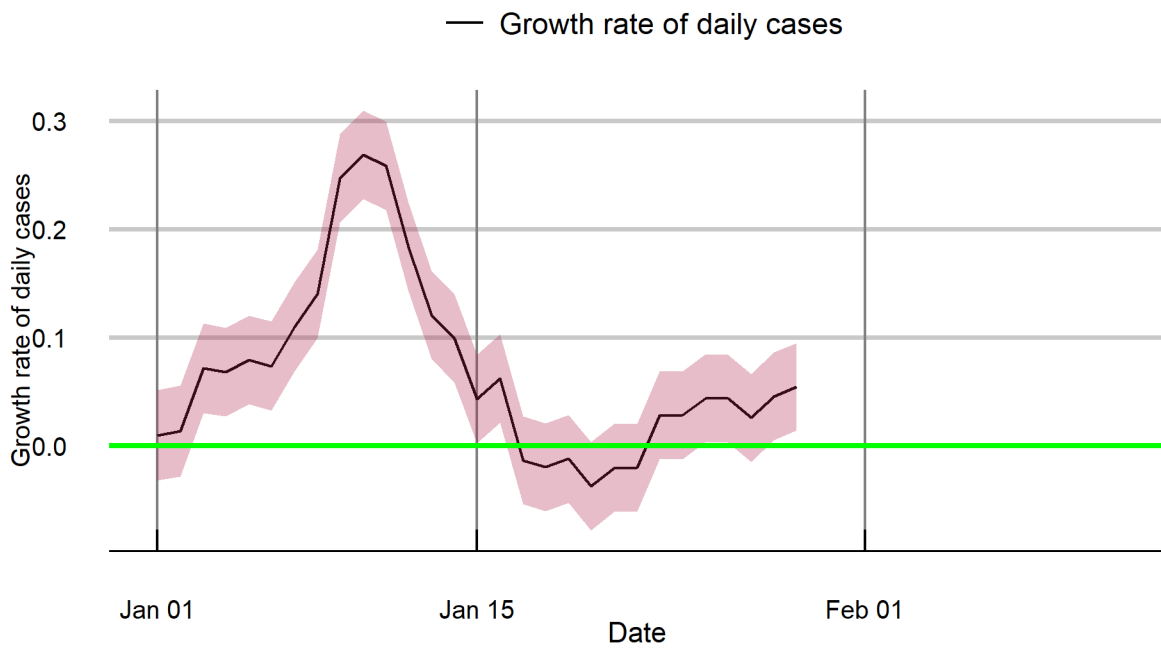
## Meghalaya



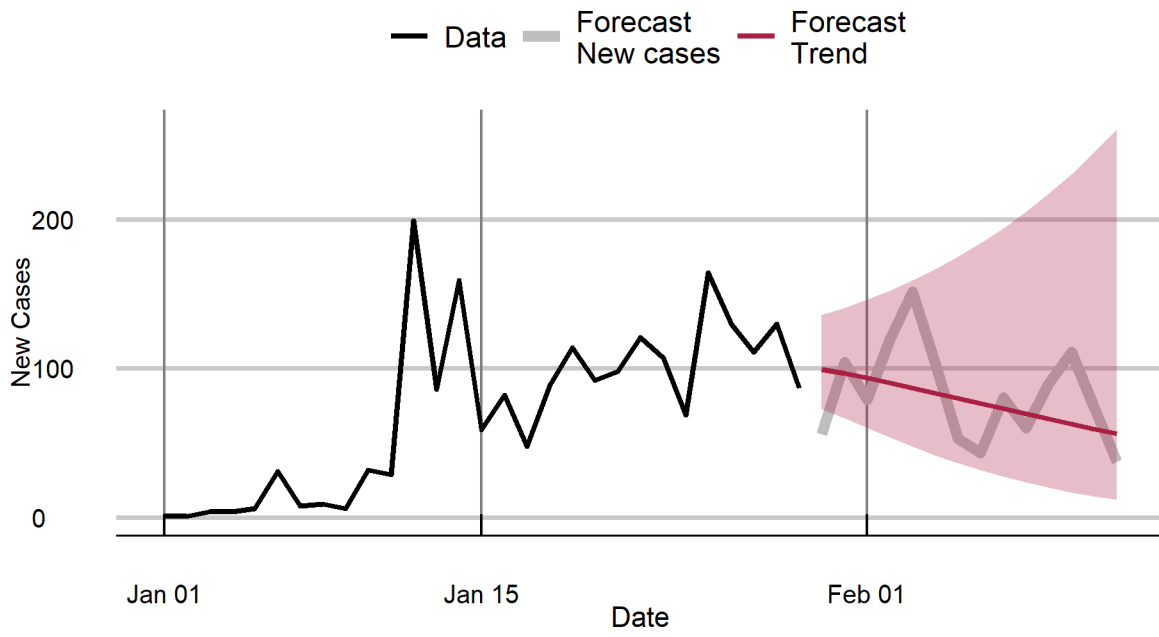
### Mizoram



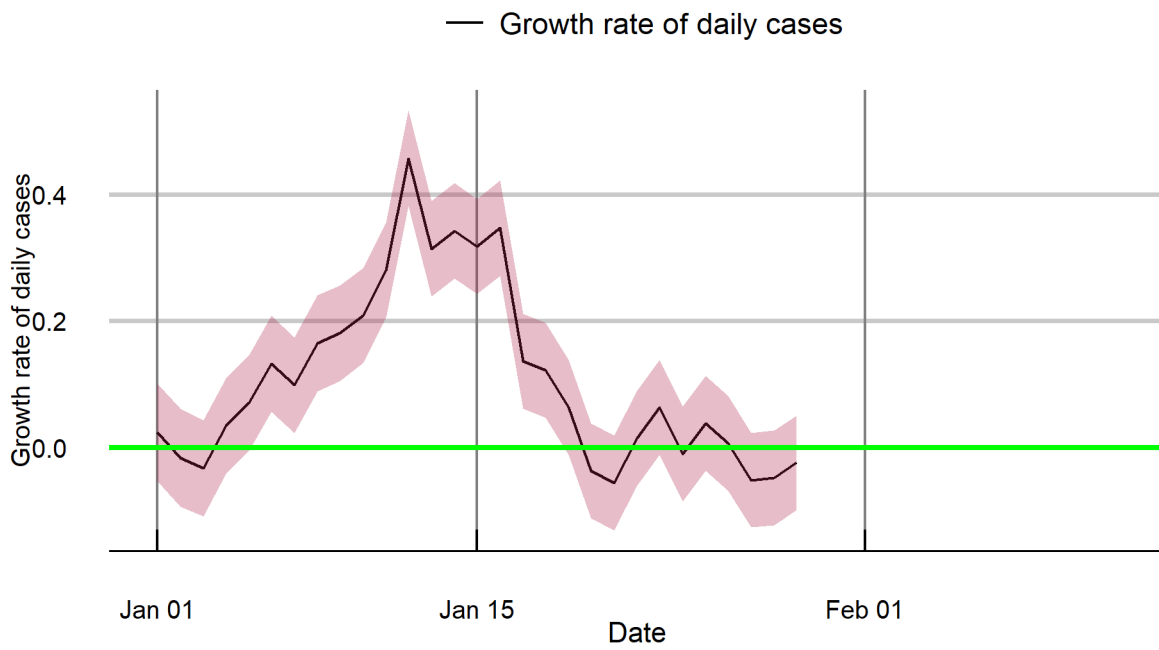
### Mizoram



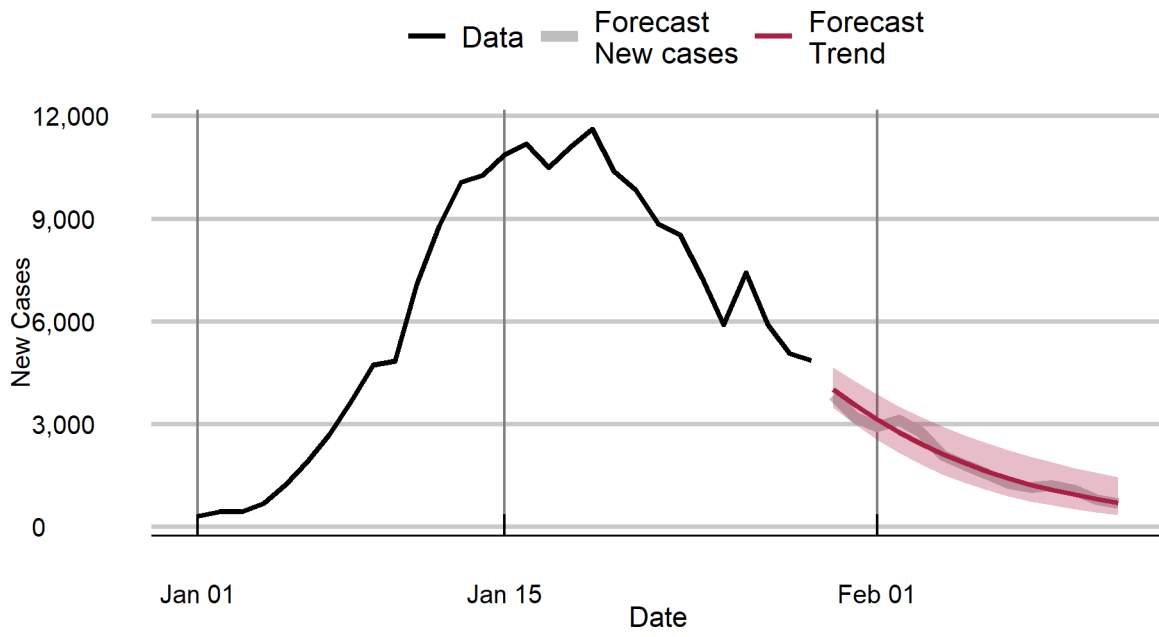
## Nagaland



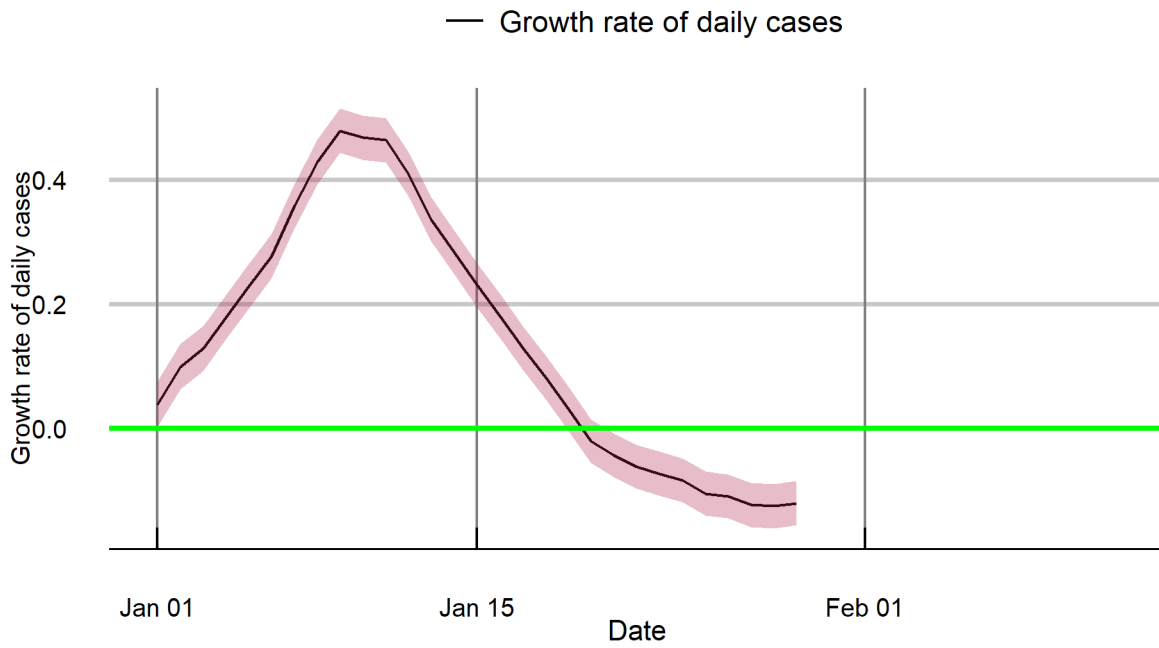
## Nagaland



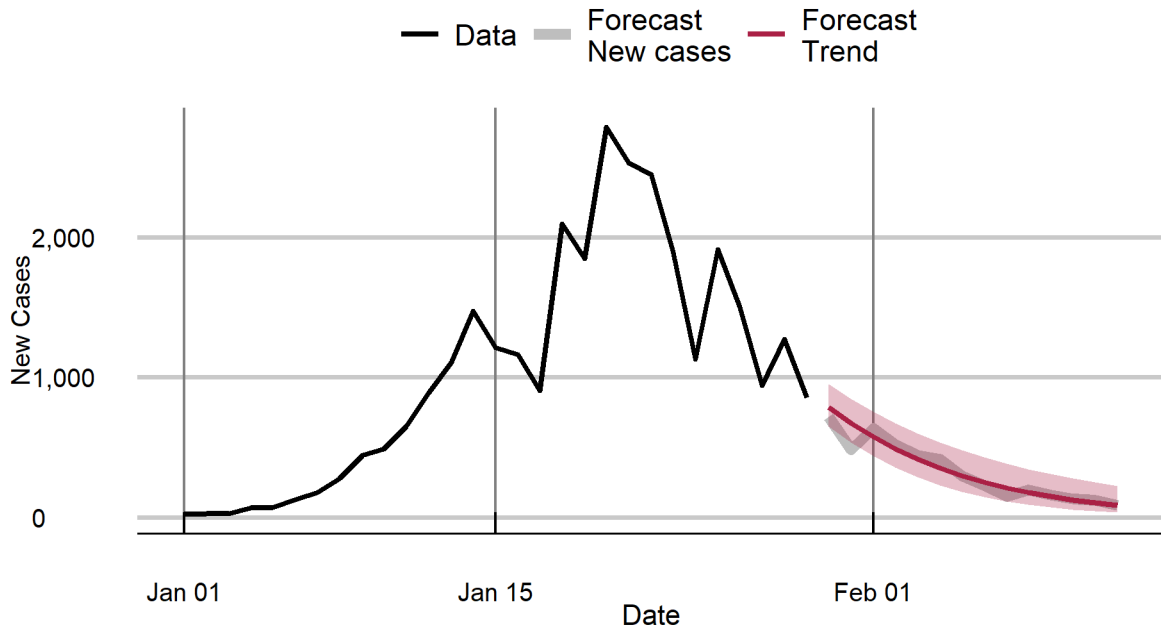
## Odisha



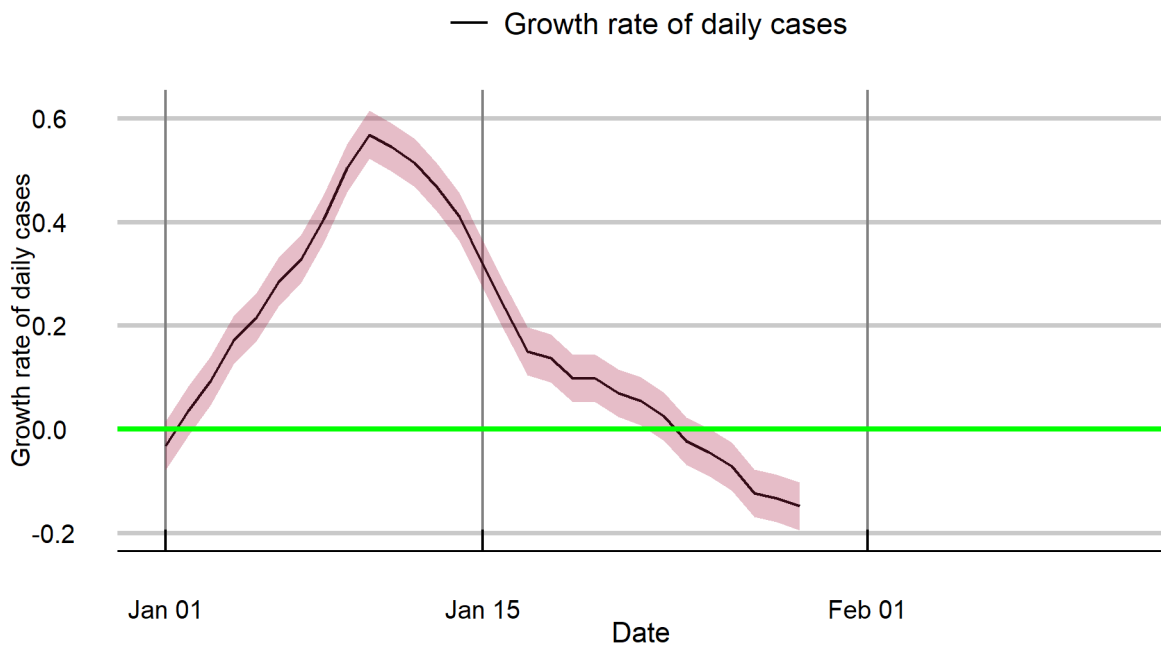
## Odisha



## Puducherry

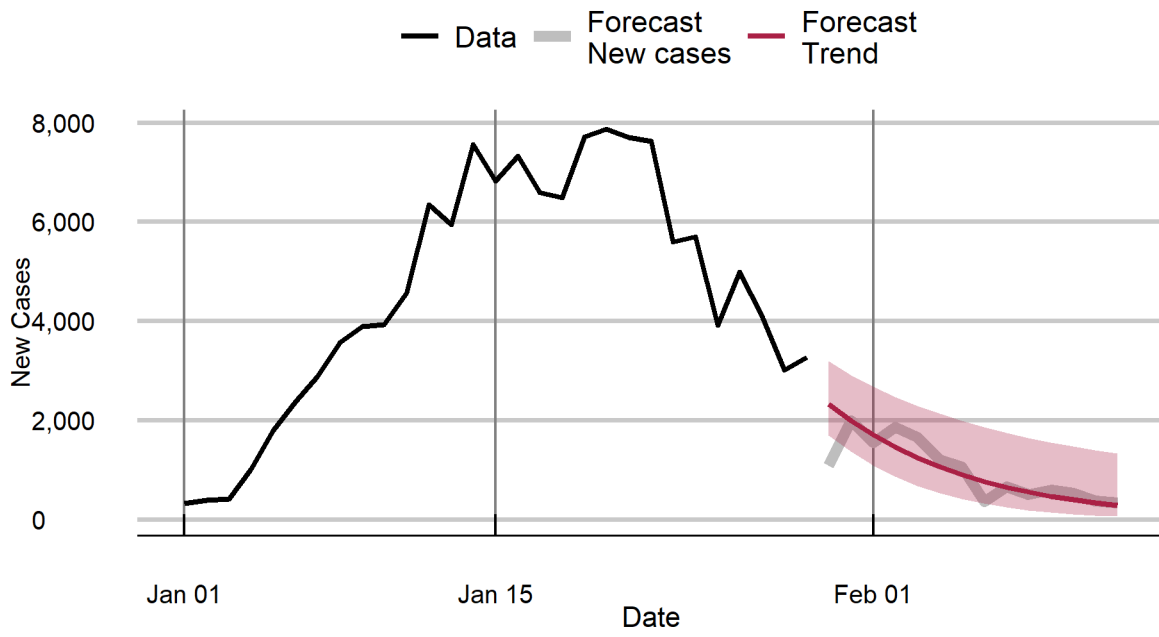


## Puducherry

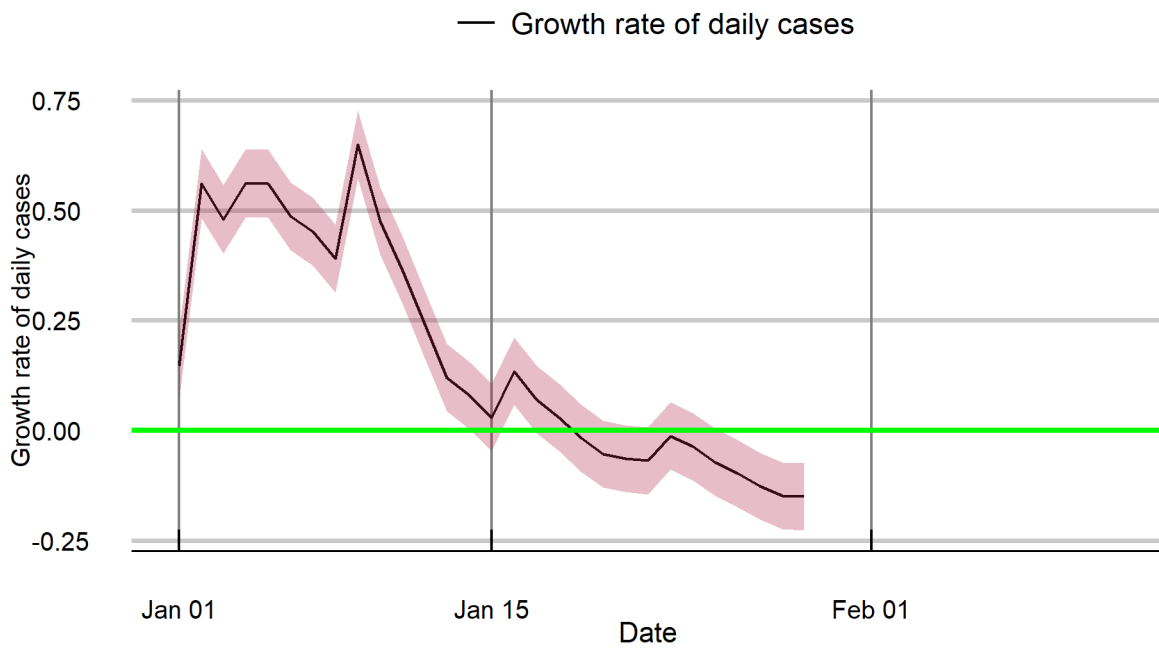




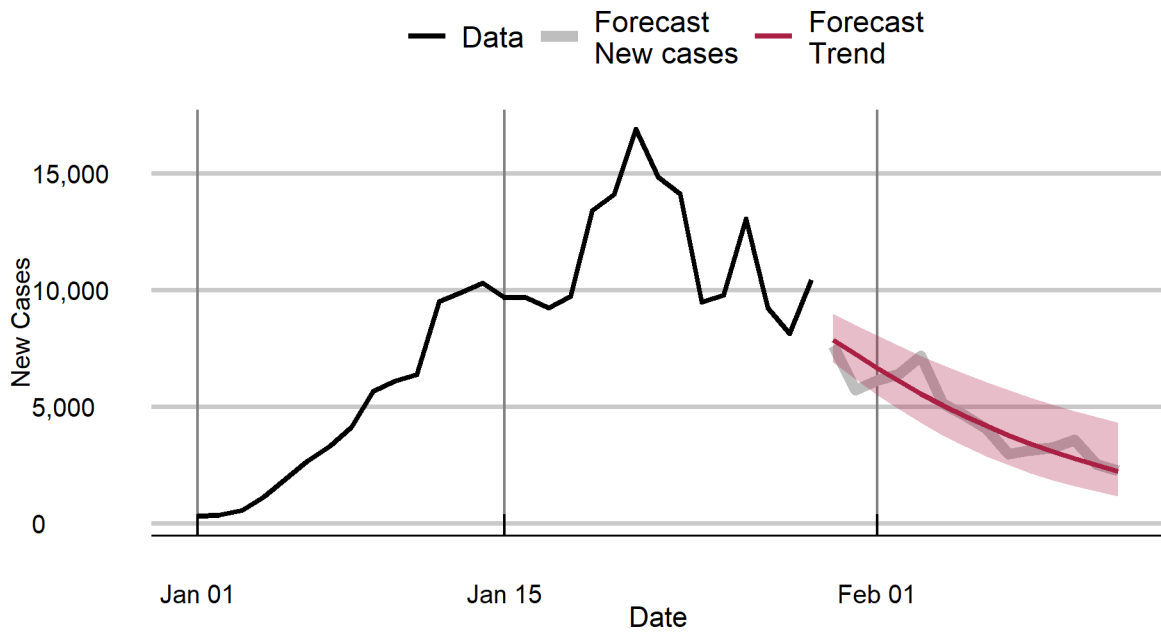
## Punjab



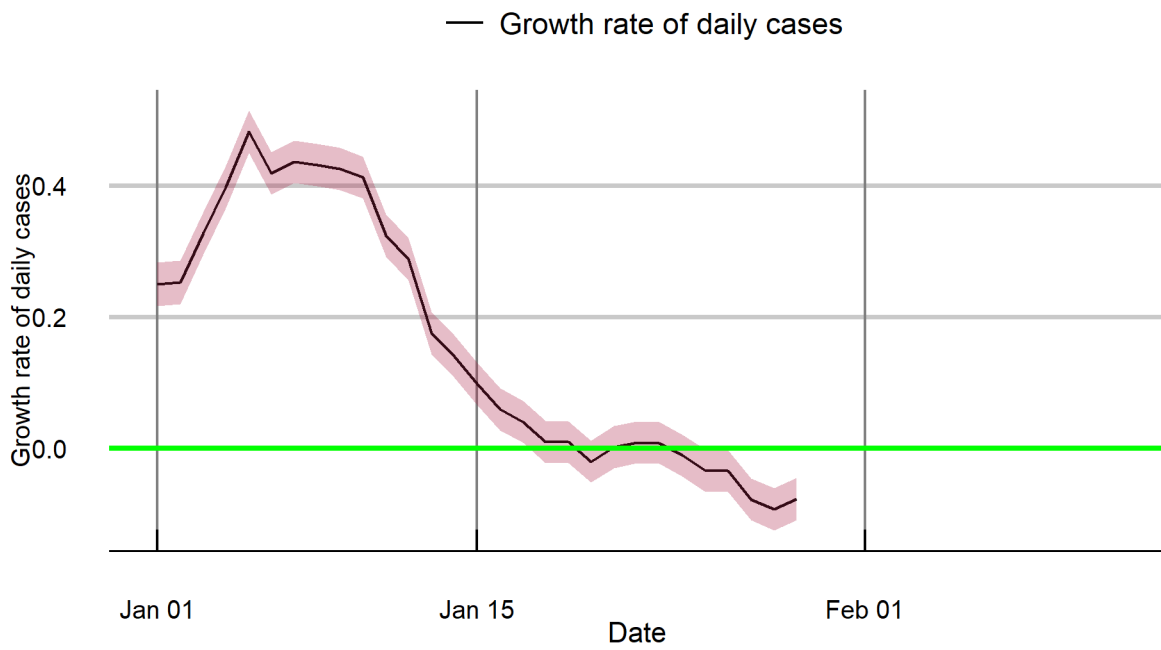
## Punjab



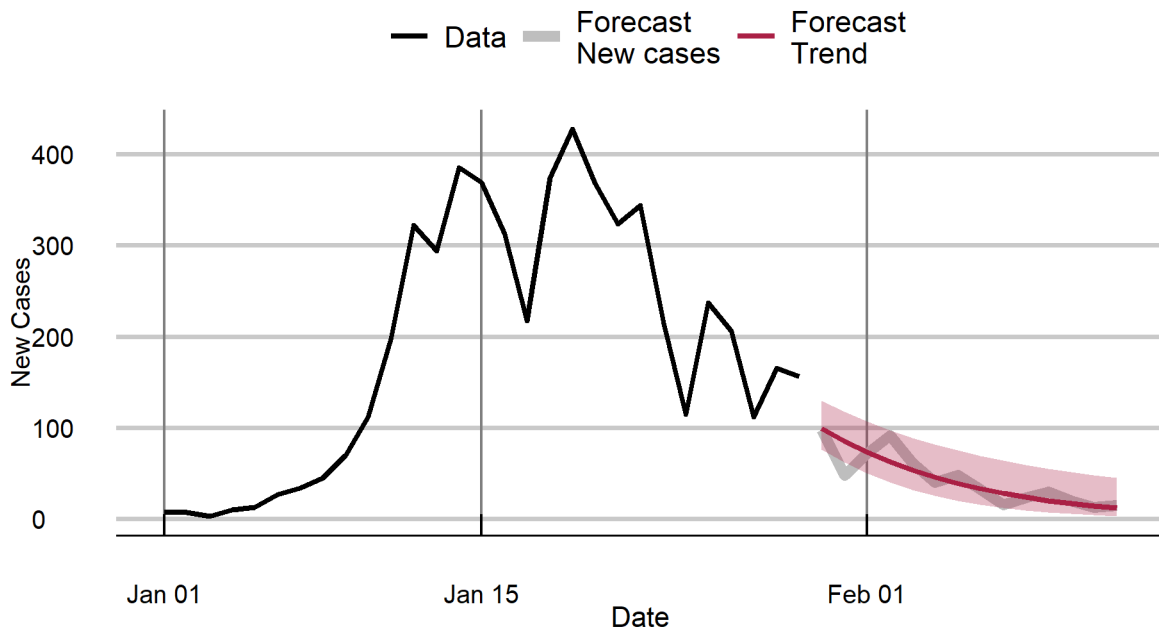
### Rajasthan



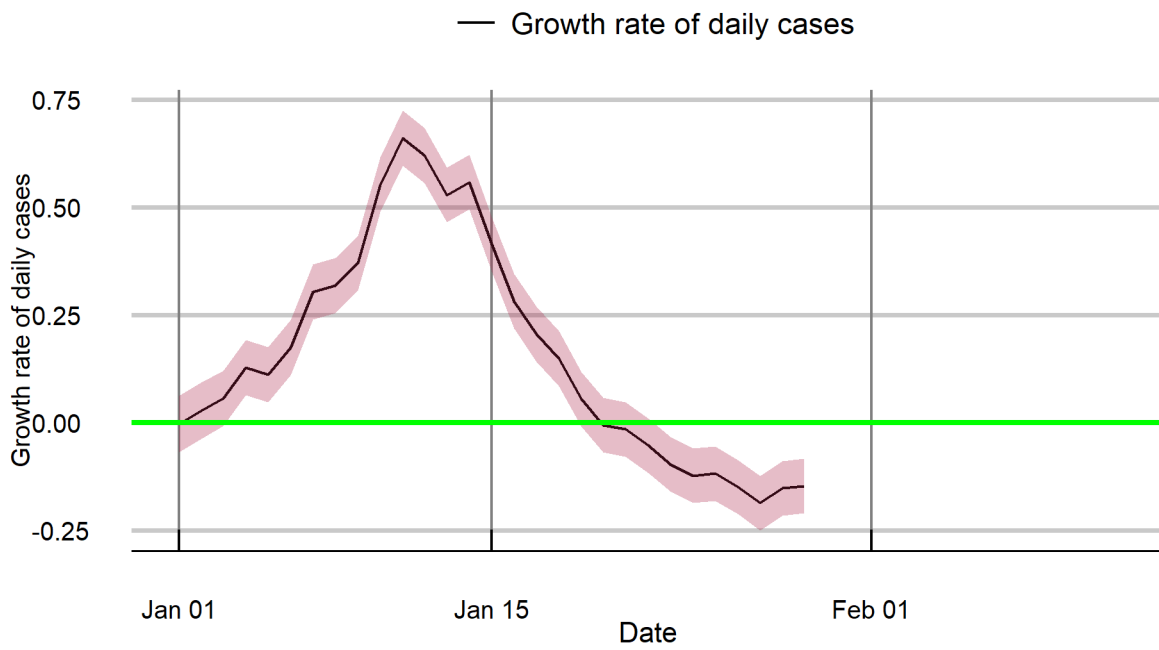
### Rajasthan



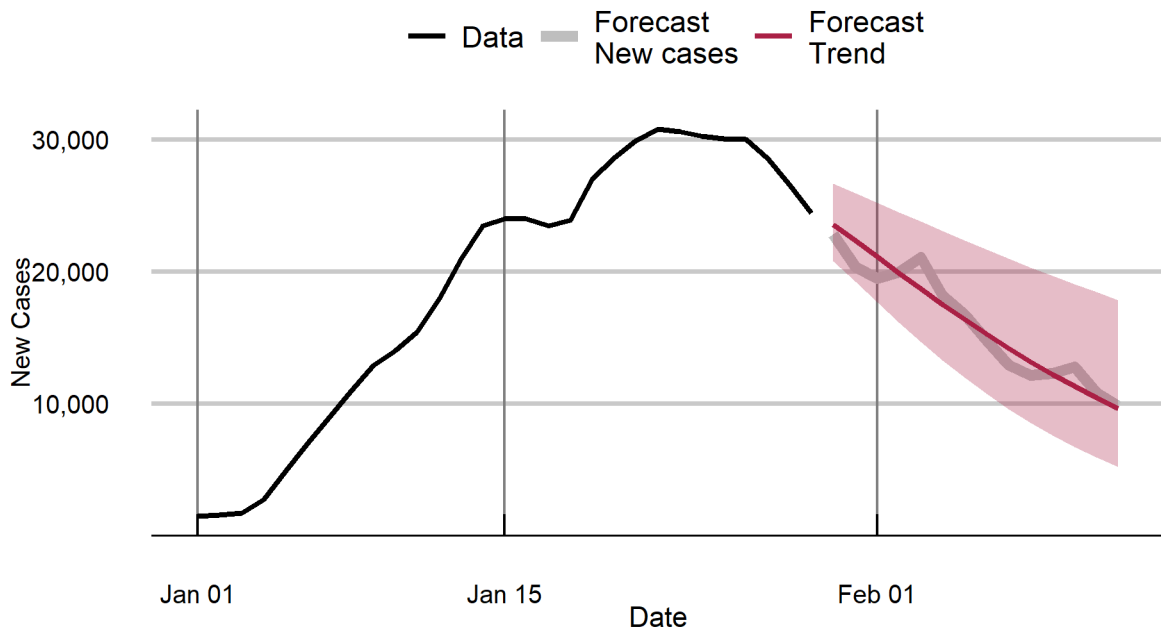
## Sikkim



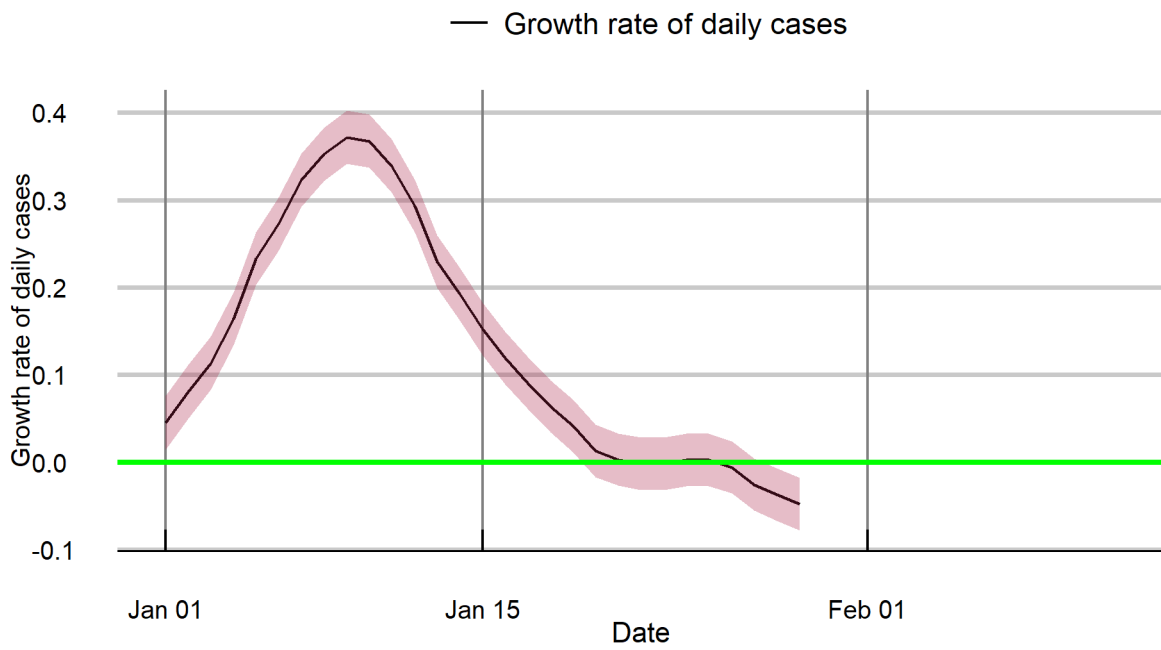
## Sikkim



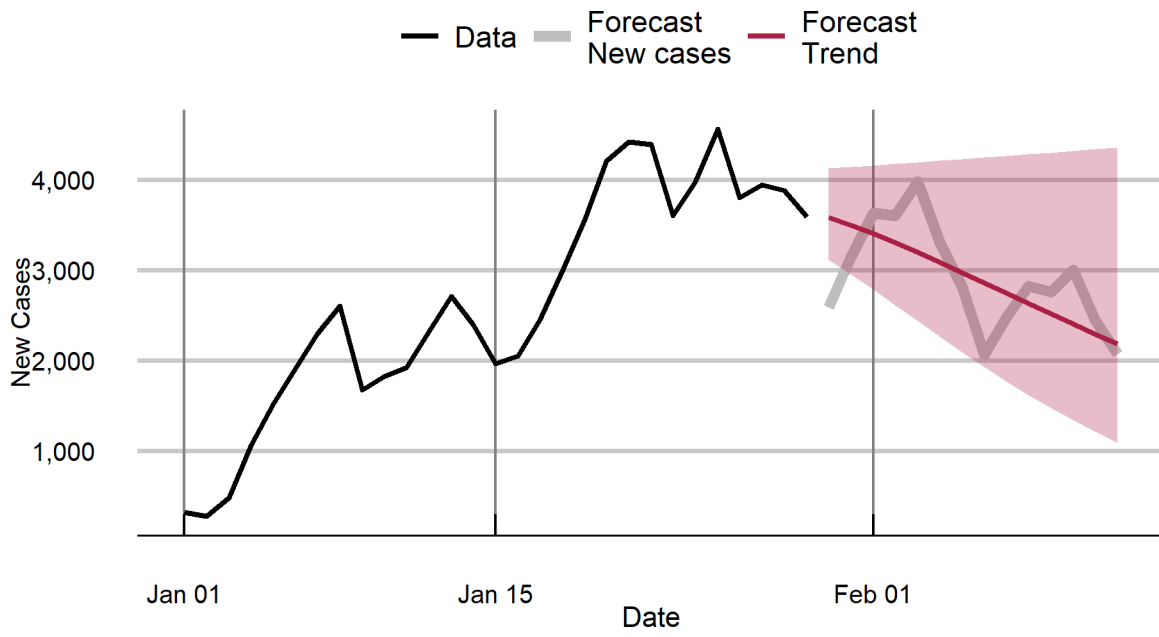
### Tamil Nadu



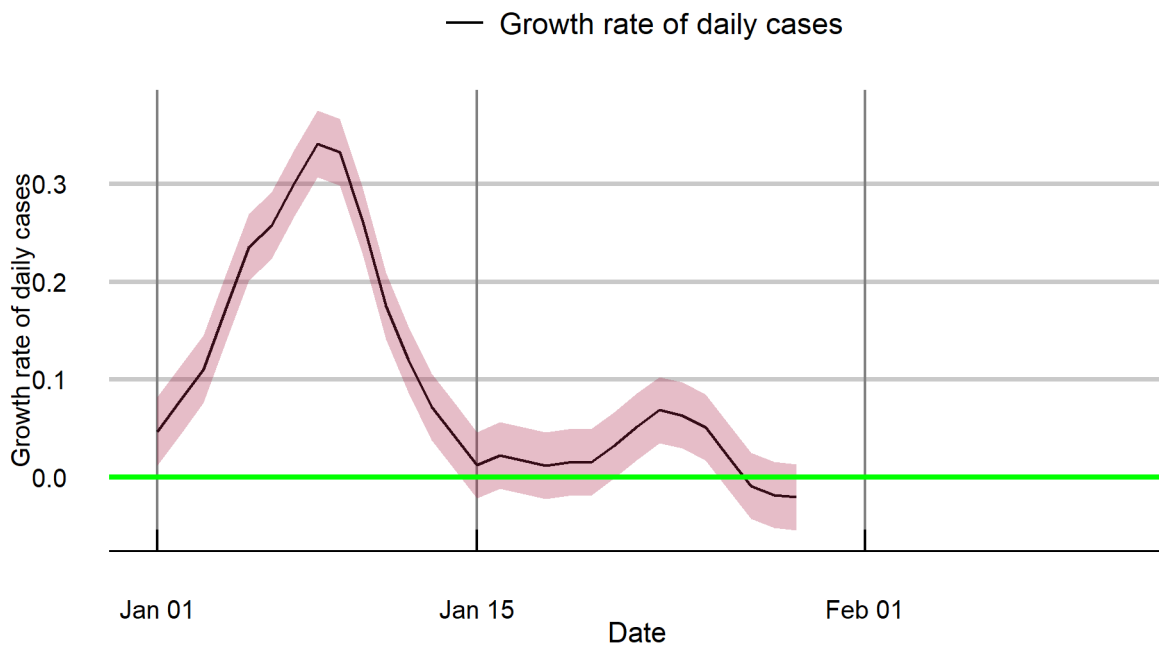
### Tamil Nadu



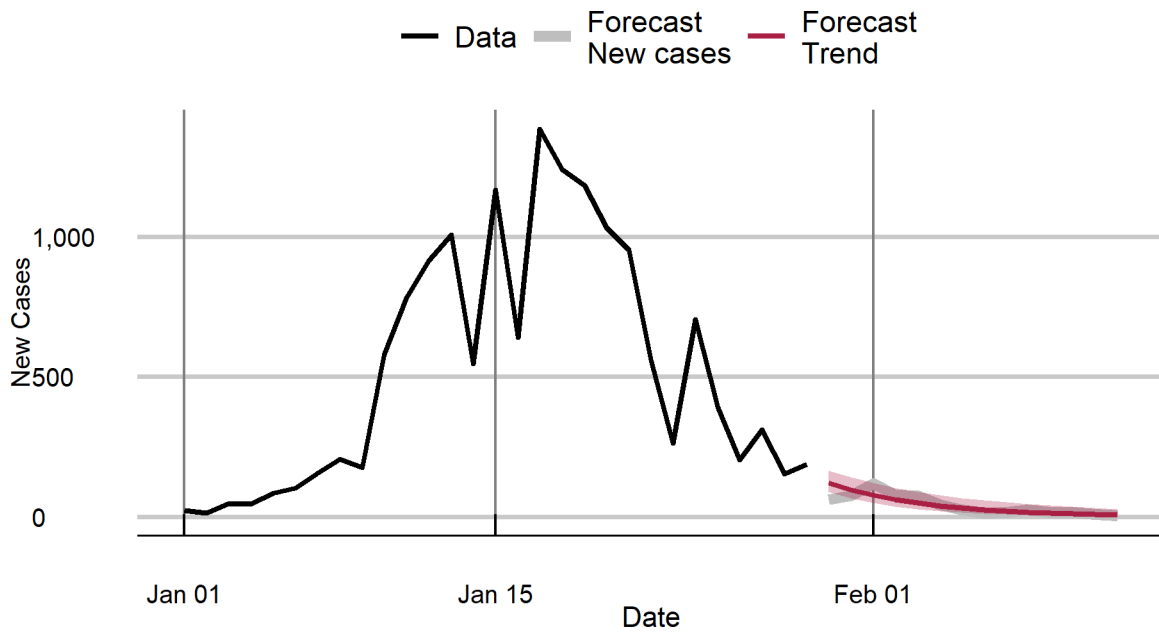
## Telangana



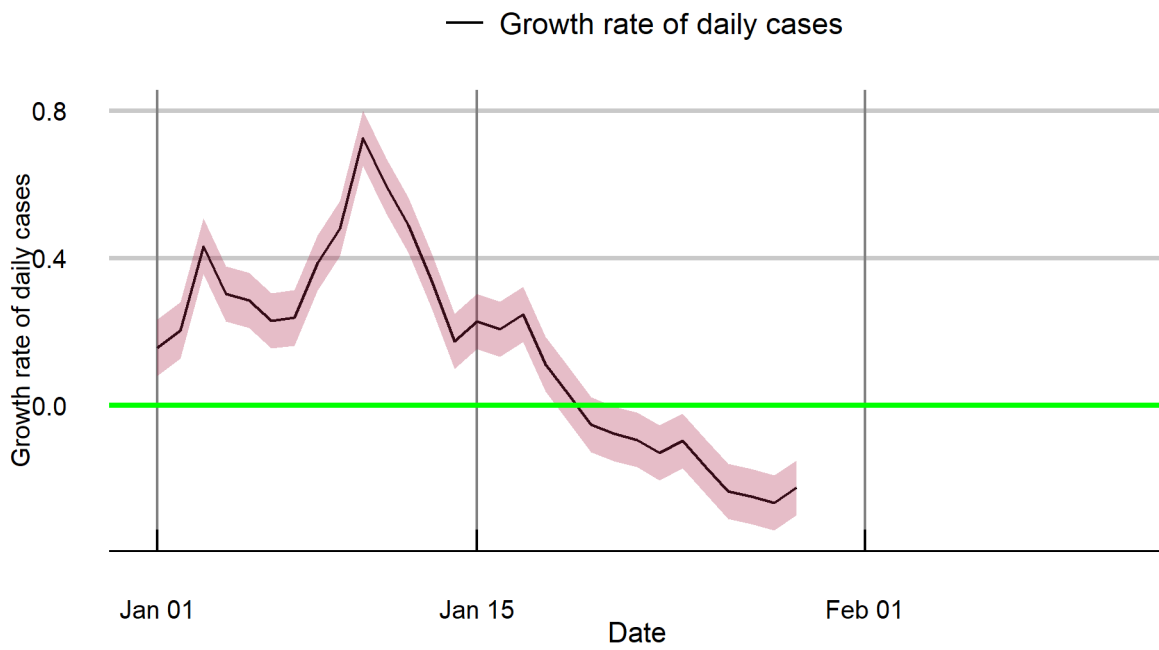
## Telangana



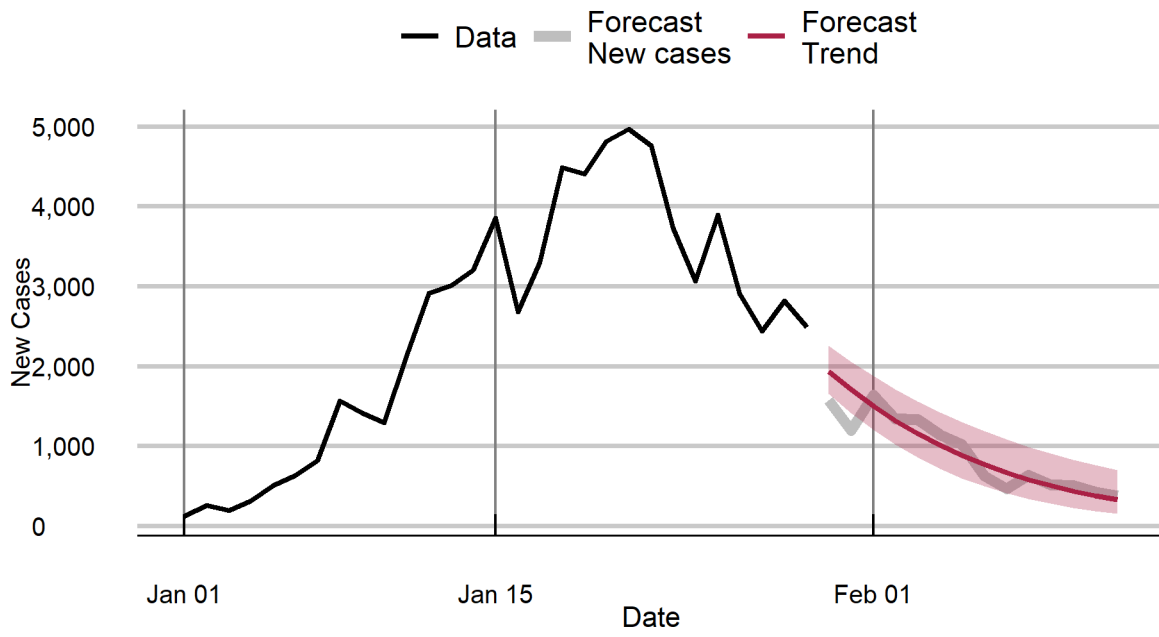
## Tripura



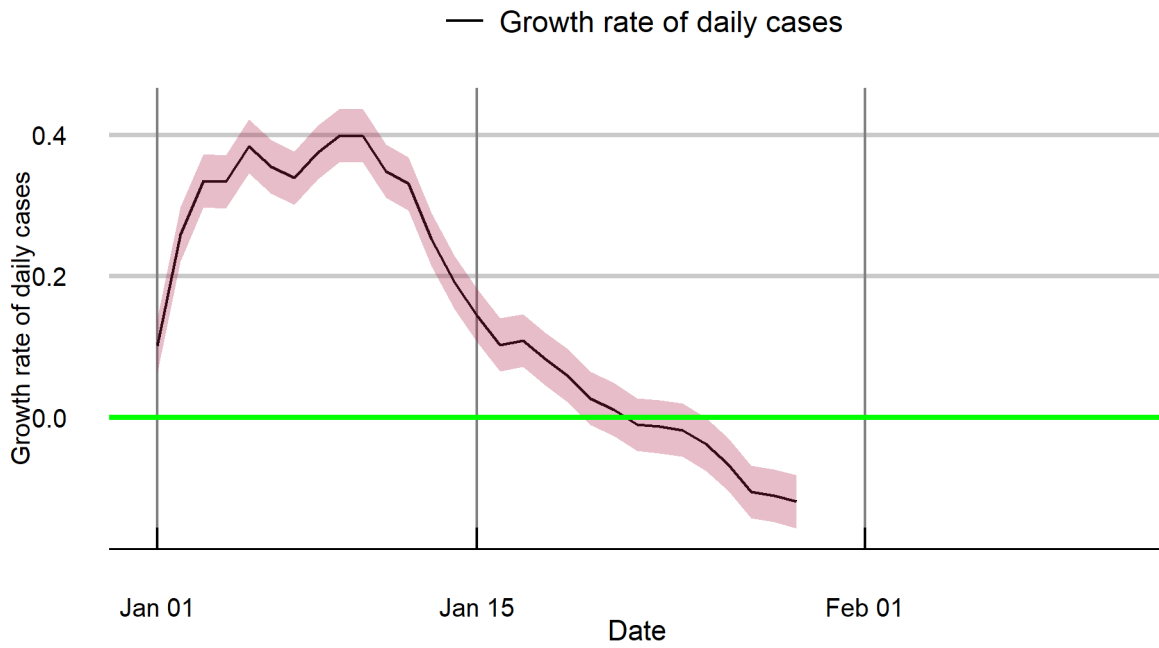
## Tripura



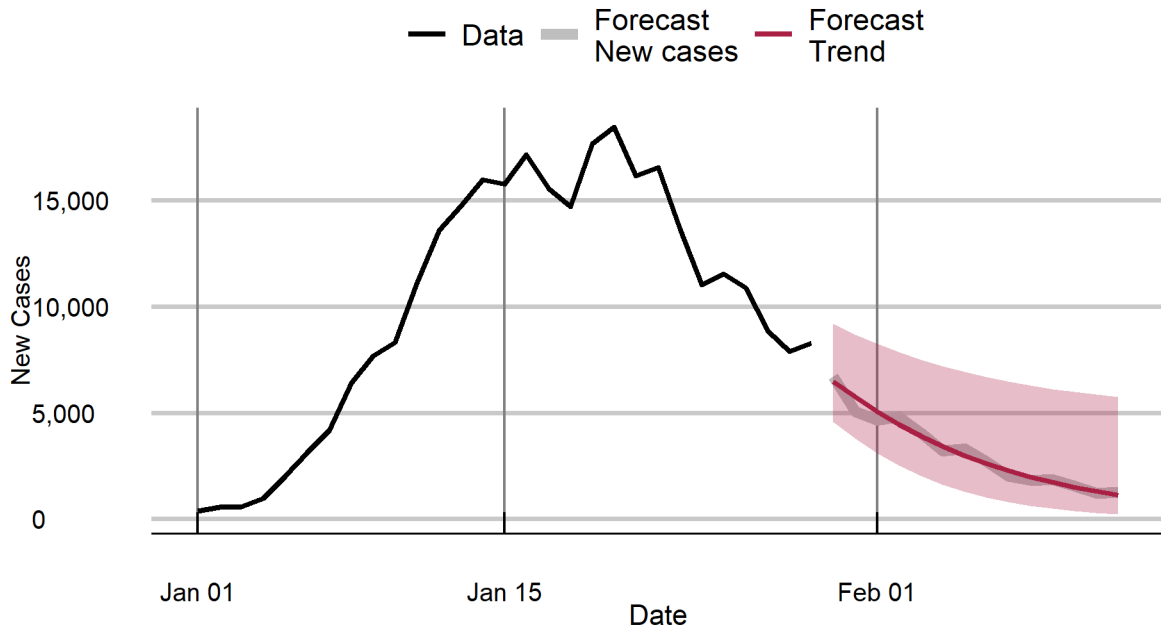
## Uttarakhand



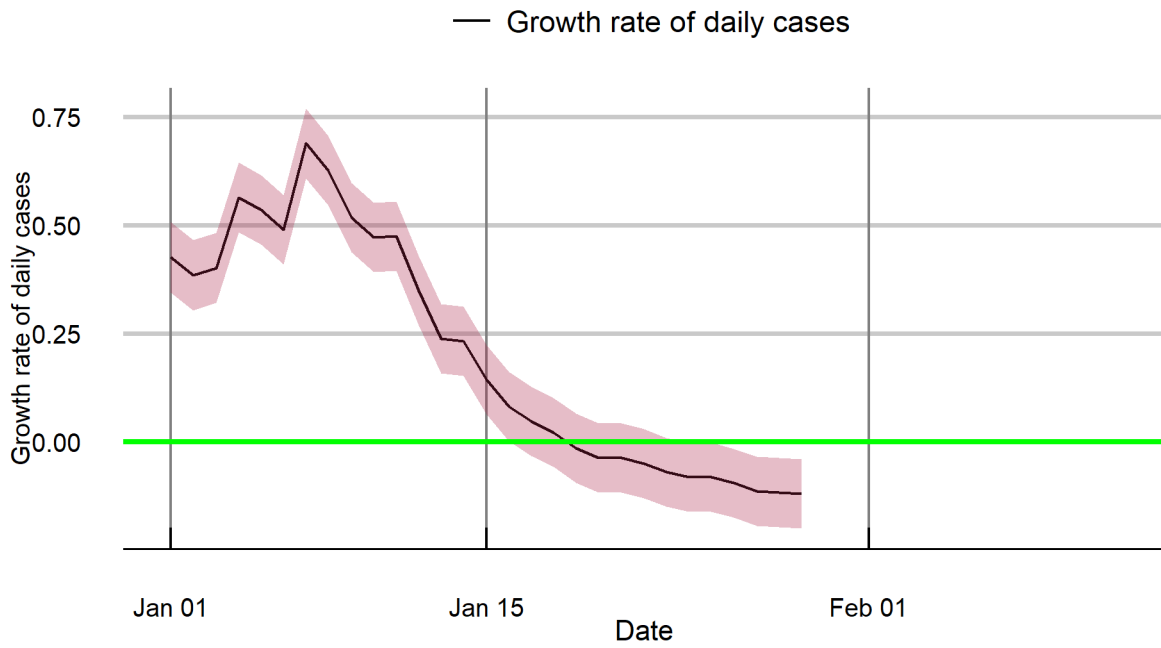
## Uttarakhand



### Uttar Pradesh

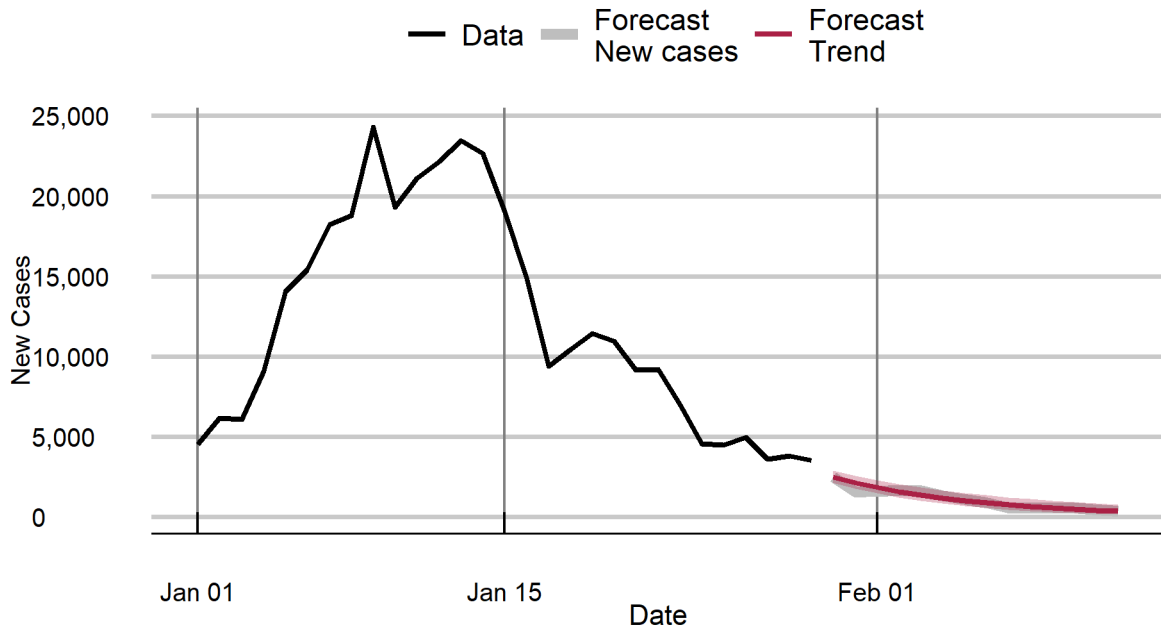


### Uttar Pradesh

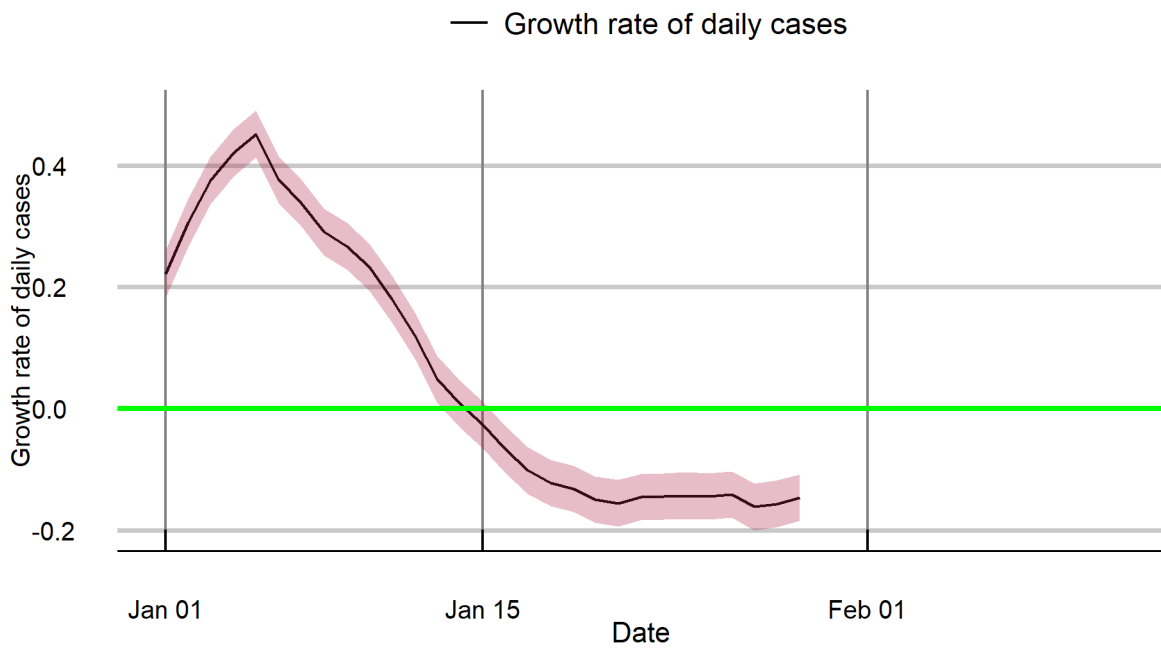




### West Bengal



### West Bengal



## Notes

---

This tracker was developed by researchers at Cambridge Judge Business School and National Institute of Economic and Social Research, working with Health Systems Transformation Platform in India, as part of a pandemic monitoring series devoted to India and its states and union territories. It provides short term forecasts of the trajectory of the pandemic, identifying states and union territories that are at risk of increases in infection incidence.

**Data:** COVID-19 confirmed cases data are sourced from Johns Hopkins University (JHU), Center for Systems Science and Engineering (CSSE) and COVID19-Bharat API.

**New cases: forecasts.** Forecasts above are based on a structural time series model that uses all the data in estimation but adapts to the trend emerging in the most recent period.

The method is described in: Harvey, A. and P. Kattuman (2020). Time series models based on growth curves with applications to forecasting coronavirus. *Harvard Data Science Review*, Special issue 1 - COVID -19. <https://hdsr.mitpress.mit.edu/pub/ozgix0yn/release/2> , and Harvey, A., P. Kattuman, and C. Thamotheram (2021). Tracking the mutant: forecasting and nowcasting COVID-19 in the UK in 2021. *National Institute Economic Review*. 256, 110-126. doi:10.1017/nie.2021.12.

**New cases: growth rate.** The filtered trends presented for daily growth rates of cases are estimated using the Kalman filter, applied to the observed series. The method filters out day of the week effects and random noise to reveal the underlying signal. Unlike methods such as the moving average, this method adapts the trend to changes in real time and characterises underlying patterns of surges or attenuations that are hidden in the volatile series. The method is described in the papers listed above.

**R:** The *R*-estimates are based on the nowcast of the growth rate; the estimation approach is described in Harvey, A. and P. Kattuman (2021). A farewell to *R*: Time series models for tracking and forecasting epidemics. *Journal of the Royal Society Interface*, 18, 20210179, <https://royalsocietypublishing.org/doi/10.1098/rsif.2021.0179>. The confidence interval is based on one standard deviation, with coverage of 68%.

**Note:** The accuracy of forecasts rely on the quality of the published data. Further, changes in government pandemic policies and in transmission relevant social behaviour may lead realised numbers to deviate from forecasts.

Andrew Harvey\*, Paul Kattuman\*, Rajeev Sadanandan#, Stefan Scholtes\*, Craig Thamotheram+

\*University of Cambridge.

#Health Systems Transformation Platform.

+National Institute of Economic and Social Research

Cambridge Centre for Health Leadership & Enterprise  
Cambridge Judge Business School  
University of Cambridge  
Trumpington Street  
Cambridge  
CB2 1AG  
United Kingdom

T +44(0)1223 339700

[health@jbs.cam.ac.uk](mailto:health@jbs.cam.ac.uk)

[www.jbs.cam.ac.uk/health](http://www.jbs.cam.ac.uk/health)

